

Price Indexes, Inequality, and the Measurement of World Poverty[†]

By ANGUS DEATON*

I discuss the measurement of world poverty and inequality, with particular attention to the role of purchasing power parity (PPP) price indexes from the International Comparison Project. Global inequality increased with the latest revision of the ICP, and this reduced the global poverty line relative to the US dollar. The recent large increase of nearly half a billion poor people came from an inappropriate updating of the global poverty line, not from the ICP revisions. Even so, PPP comparisons between widely different countries rest on weak theoretical and empirical foundations. I argue for wider use of self-reports from international monitoring surveys, and for a global poverty line that is truly denominated in US dollars. (JEL C43, D31, I31, I32, F31)

This lecture is about comparing living standards across countries, and using those comparisons to count the number of poor people in the world. If we ask people whether they consider themselves to be poor, or how much money someone would need to get by in their community, they appear to have little difficulty in replying. Beyond the local level, many countries, including the United States, regularly publish national counts of the number of people in poverty, and while these numbers and the procedures for calculating them are contested and debated, the estimates typically carry sufficient legitimacy to support policy; see Connie Citro and Robert Michael (1995) for the history in the United States, and Rebecca Blank and Mark Greenburg (2008) for a recent proposal for reform. But once we try to calculate the number of poor people in the world, matters are more complicated. The World Bank's global poverty count, which started with Montek Ahluwalia, Nicholas Carter, and Hollis Chenery (1979), and which became the dollar-a-day count in the *World Development Report 1990*, was incorporated into international policymaking and discussion via the Millennium Development Goals (MDGs)—the first of which is to “halve, between 1990 and 2015, the proportion of people whose income is less than \$1 a day.” This global count, which the World Bank defines and monitors, has an apparent transparency that helps account for its rhetorical success: it is simply the number of people in the world who live on less than a dollar a day, with the relevant dollar adjusted for international differences in prices. But transparency and simplicity are more apparent than real. There are many complexities beneath the surface, and these are the subject matter of this paper, particularly the calculation of the global line and the adjustment for international differences in prices using purchasing power parity exchange rates. Price adjustment is also important for other purposes,

[†] Presidential Address delivered at the one hundred twenty-second meeting of the American Economic Association, January 4, 2010, Atlanta, GA.

* Princeton University, 328 Wallace Hall, Princeton, NJ 08544 (e-mail: deaton@princeton.edu). I am grateful to Olivier Dupriez, Alan Heston, and Sam Schulhofer-Wohl who have collaborated with me on related work; to them and to Erwin Diewert, Yuri Dikhanov, D. S. Prasada-Rao, and Fred Vogel who have over the years taught me about international price comparisons; as well as to the Development Economics Data Group at the World Bank for supplying me with data and for their patience and help with my questions. I also thank Tony Atkinson, Tim Besley, Jean Drèze, Esther Duflo, Branko Milanovic, François Bourguignon, Anne Case, Olivier Dupriez, Bill Easterly, Alan Heston, and Martin Ravallion for comments on early drafts. The views expressed here are my own.

such as the construction of databases such as the Penn World Table, which underpins almost all of economists' empirical understanding of the process of economic growth, as well as for the measurement of global income inequality, which is another of my main concerns.

One goal of this paper is to understand why almost half a billion people were moved into poverty at the time of the revision of the purchasing power parity (PPP) exchange rates in the 2005 round of the International Comparison Project (ICP). This same revision also increased global income inequality, widening the apparent distance between poor and rich countries. I shall argue that the increase in poverty had little to do with the ICP, and much to do with an inappropriate increase in the global poverty line. The causes of the increase in inequality are harder to pinpoint, but my investigations lead to skepticism about our ability to make precise comparisons of living standards between widely different countries such as poor countries in Africa and rich countries in the Organization for Economic Cooperation and Development (OECD).

In spite of the attention that they receive, global poverty and inequality measures are arguably of limited interest. Within nations, the procedures for calculating poverty are routinely debated by the public, the press, legislators, academics, and expert committees, and this democratic discussion legitimizes the use of the counts in support of programs of transfers and redistribution. Between nations where there is no supranational authority, poverty counts have no direct redistributive role, and there is little democratic debate by citizens, with discussion largely left to international organizations such as the United Nations and the World Bank, and to nongovernmental organizations that focus on international poverty. These organizations regularly use the global counts as arguments for foreign aid and for their own activities, and the data have often been effective in mobilizing giving for poverty alleviation. They may also influence the global strategy of the World Bank, emphasizing some regions or countries at the expense of others. It is less clear that the counts have any direct relevance for those included in them, given that national policymaking and the country operations of the World Bank depend on local, not global, poverty measures. Global poverty and global inequality measures have a central place in a cosmopolitan vision of the world, in which international organizations such as the UN and the World Bank are somehow supposed to fulfill the redistributive role of the missing global government; see for example Thomas Pogge (2002) or Peter Singer (2002). For those who do not accept the cosmopolitan vision as morally compelling or descriptively accurate, such measures are less relevant: John Rawls (1999), Thomas Nagel (2005), Leif Wenar (2006).

The paper is organized as follows. Section I explains how the dollar a day poverty numbers are calculated and how they depend on purchasing power parity exchange rates. It shows that poverty measures are sensitive to the PPPs used in their construction and establishes the basic facts and puzzles to be addressed, particularly the increases in poverty and inequality associated with the latest ICP revision. Section II is somewhat more technical and can be skipped without losing the thread of the main argument. It discusses the components of the construction of PPPs that are particularly important for measuring world poverty and inequality, as well as how PPP indexes need to be reweighted for use in poverty measurement. It argues, by reference to my related work with Olivier Dupriez (2009), that the reweighting, although a clear conceptual improvement, matters less than might be thought. Section III returns to the main argument and is concerned with the definition of the global poverty line: I discuss ways of constructing the line based on the international price indexes and the national poverty lines of poor countries. As is always the case with poverty lines, how the poverty line is updated with respect to new information deserves as much or more attention than how its original value is set. I argue that the updating procedure in current use is incorrect, that it can result in reductions in national poverty causing *increases* in global poverty, and that this explains why the global poverty counts increased so much in the latest revision. Paradoxically, one of the main reasons that India (and the rest of the world) became poorer was because India had grown less poor. I argue for a definition of the line, and an

updating method, that is substantially different from those currently in use, and that preserves a better continuity with previous estimates.

Section IV, which is again somewhat more technical, is an enquiry into the international price indexes themselves, with a focus on the factors that affect global inequality. It starts from the question of how to price comparable goods in different countries and whether the ever more precise specification of goods by the ICP has had the effect of making poor countries poorer relative to rich countries, widening our estimates of international inequality, and causing the global poverty line to increase in dollar terms at a rate that is markedly slower than the rate of inflation in the United States. More generally, I discuss the special difficulties of making comparisons between countries whose relative prices and patterns of consumption are very different, for example between Japan and Kenya, or Britain and Cameroon. Such comparisons are required if we are to make multilateral price index numbers for the world as a whole, and I use data from the 2005 ICP to investigate their credibility. My analysis shows that these comparisons rest on weak theoretical foundations and are fragile in practice.

Section V returns to the main argument and looks briefly at a monitoring system based on asking people about how their lives are going; I use data from the Gallup World Poll which collects an annual sample of all the people of the world. Section VI concludes, and speculates on the global system of income and poverty statistics as a whole. I argue that we should be less ambitious and more skeptical in using the international data, particularly when comparing poor and rich countries. I also make recommendations for improvements in the way the poverty counts are calculated, for example by bringing closer together the rhetoric and the reality of the dollar a day poverty line. I also argue that while changes in the poverty line affect the levels of global poverty more than they affect its rate of change, the levels are themselves important for the international debate.

I. Global Poverty and Global Inequality

Many countries have their own national poverty lines and poverty headcounts. One candidate measure for an international count would use those national numbers and add them up over all countries. The 2008 annual poverty line in the United States was \$21,834 for a family of two adults and two children, or \$14.96 per person per day; 13.2 percent of Americans live below this line. India in 2004–05 had two poverty lines, one for rural households of 11.71 rupees per person per day, and one for urban households of 17.71 rupees; at the 2005 PPP exchange rates, these lines are \$0.80 and \$1.21 per person per day (about a third of that at market exchange rates), and 27.5 percent of the Indian population lives below them. If we take the view that poverty is relative to prevailing living standards in the society in which people live, these headcount ratios might be taken to be comparable. Yet the global poverty counts aim to measure *absolute* poverty and to count those who are destitute by a common global standard which might be supposed to include all of the locally poor Indians, and none of the locally poor Americans. By this view, we might take one or the other Indian lines and use PPP exchange rates to convert it to other currencies, and then sum the total number of people in the world who live on less than the local purchasing power equivalent of the Indian line. The pioneering paper by Ahluwalia, Carter, and Chenery (1979) used a global line based on the Indian poverty line, but since World Bank (1990) the global line has been an average of the international dollar value of local lines of a number of poor countries. Exactly which average is a matter of some importance, as is whether the average is better than the original Indian only line, and I shall return to both issues.

Table 1 presents the key numbers. The first three columns, taken from the World Bank's (2008b) poverty supplement to the World Development Indicators, show the latest estimates for 1981 (which is as far back as these estimates go), 1993, and 2005. These are based on the latest

TABLE 1—POVERTY HEADCOUNT RATIOS

	Time series			Alternate estimates for 1993		
	1981	1993	2005	1993	1993	1993
Poverty line	\$1.25	\$1.25	\$1.25	\$1.01	\$1.08	\$1.25
PPP date	2005	2005	2005	1985	1993	2005
East Asia & Pacific	77.7	50.8	16.8	26.0	25.2	50.8
Europe & Central Asia	1.7	4.3	3.7	3.5	3.5	4.3
Latin America & Caribbean	12.9	10.1	8.2	23.5	15.3	10.1
Middle East & North Africa	7.9	4.1	3.6	4.1	1.9	4.1
South Asia	59.4	46.9	40.3	43.1	42.4	46.9
Sub-Saharan Africa	53.4	56.9	50.9	39.1	49.7	56.9
Total percentage in poverty	51.9	39.2	25.2	29.4	28.2	39.2
Total millions in poverty	1,900	1,799	1,374	1,350	1,304	1,799

Notes: Poverty line is the global poverty line expressed in year X international dollars, where X is the PPP date. Apart from the poverty line, the PPP date, and the total millions in poverty, all numbers are percentages and are estimates of the fraction of the populations of the covered (developing) countries that are in poverty in each year. All numbers are estimated from household survey data.

Sources: Columns 1 through 3 and column 6 from World Bank (2008b, Table 3). Column 4 from Martin Ravallion and Shaohua Chen (1997, Table 5). Column 5 from Chen and Ravallion (2000, Table 2).

version of the “dollar-a-day” global poverty line, which is \$1.25 per person per day in 2005 international dollars, and show the well-known reduction in the global headcount ratio, from 51.9 percent of the developing world’s population in 1981 to 25.2 percent in 2005. In spite of growth in the world’s population, the number of people in this kind of poverty has fallen by more than half a billion in the last quarter century. Much of this success comes from China, in the East Asia and Pacific region. The headcount ratio in sub-Saharan Africa has fallen only slowly, and there are 176 million more Africans in poverty in 2005 than in 1981. South Asia, dominated by India, is part success and part failure, and the Bank—and the government of India—estimate that, in spite of a falling headcount ratio, there has been a small increase in the numbers of Indians in poverty since 1981, in spite of India’s relatively rapid growth in per capita GDP in recent years, and its relatively slow rate of population growth. The overall improvement in global poverty and the broad regional structure of that improvement show up in all versions of the counts. Even so, it is worth noting that these counts are based entirely on household survey data, and that there are often major discrepancies in growth rates between the survey data and the national accounts so that the counts in Table 1 may understate the rate of poverty reduction; see Deaton (2005).

The last three columns in Table 1 look at three different sets of headcount ratios for 1993. The International Comparison Program has updated its estimates of PPP exchange rates on an irregular basis, with each round a substantial improvement on the previous one; the last three benchmarking exercises were in 1985, 1993, and 2005 with a particularly marked increase in consistency and coverage between the last two. The World Bank uses these estimates to update its global poverty line—defined as the average PPP poverty line for a group of the world’s poorest countries—and to revise the conversions of that line into local currencies. The original poverty line of \$1.01 in 1985 PPP (\$370 per year, in World Bank 1990, Figure 2.1 and Table 2.1) rose to \$1.08 in 1993 international dollars, and to \$1.25 in 2005 international dollars. By contrast, the US CPI rose by 34 percent from 1985 to 1993 and a further 35 percent from 1993 to 2005; this divergence is driven by the fact that ICP revisions move price levels upward in poor countries relative to rich countries, so that poor country poverty lines are worth less in US dollars.

The revision from 1985 to 1993 had relatively little effect on the global count but made sub-Saharan Africa appear to be much poorer, and Latin America appear to be much less poor. Indeed, it is the 1993 revision that “established” sub-Saharan Africa as the region with the

highest headcount ratio, a fact that has dominated subsequent discussions of world poverty; prior to revision, the measured prevalence of poverty in South Asia was substantially higher than in sub-Saharan Africa. At the time of that revision, I commented that “changes of this size risk swamping real changes, and it seems impossible to make statements about changes in world poverty when the ground underneath one’s feet is changing in this way,” Deaton (2001). The 2005 revision shifts the ground even more. The global count for 1993 jumps by almost half a billion people, the headcount ratio for East Asia doubles, there are substantial increases in Africa and South Asia, and a large *reduction* in Latin America. The Table shows these numbers for 1993, for which there are estimates using three sets of PPPs, but there are similar large upward revisions for more recent years; for example, Shaohua Chen and Martin Ravallion (2010, Table 2) estimate that for 2005, there were 1,377 million poor people using the latest method. In an earlier version of the paper, they reported that the number would have been 931 million using the methods in use prior to the latest ICP revision. The size of the earthquakes seems to be increasing.

Let me emphasize that the general trends in the left-hand side of Table 1 reappear whichever PPPs and poverty lines are used. The shifting of the ground refers only to the level of global poverty, and to its regional distribution. Provided we are prepared to ignore the fact that each new set of estimates makes the world look like a very different place, the global trends are relatively secure, although I shall enter some qualifications in Section VI. Given the clear improvement in the successive ICPs, I would certainly not advocate the retention of outdated and flawed data, and indeed the ICP is far from the only source of uncertainty in the world poverty measures, which depend on the timeliness, availability, coverage, design, and quality of national household surveys, national consumer price indexes, and national accounts. Yet the size of each set of revisions, and the reasonable presumption that future rounds of the ICP will change the picture yet again, raises the question of whether the poverty monitoring system is accurate enough and stable enough to be useful in monitoring progress and for identifying countries and regions where deprivation is greatest.

The ICP revision in 2005 was associated with a substantial increase in the World Bank’s measure of global poverty. The World Bank’s poverty supplement to the World Development Indicators writes “The new poverty line maintains the same standard for extreme poverty—the poverty line typical of the poorest countries of the world—but updates it using the latest information on the cost of living in developing countries. The new data change our view of poverty in the world. There are more poor people,” World Bank (2008b, page 1). The Chief Economist of the World Bank commented “the sobering news—that poverty is more pervasive than we thought—means that we should redouble our efforts, especially in sub-Saharan Africa.”

Global income inequality also changed with the revision to the ICP. Branko Milanovic (2009), using household survey data, has estimated that the Gini coefficient of income inequality over all the citizens of the world rose from 0.65 to 0.70 as a result of the revision. Figure 1 provides another way of looking at the change and shows population weighted inequality across countries using per capita GDP in PPP dollars as the income measure, what Milanovic calls “Concept 2” inequality; see also Sudhir Anand and Paul Segal (2008). The figure shows the Gini coefficient of population weighted per capita national income inequality, and this would be the global Gini if incomes were equally distributed within countries and the national accounts data and PPP indexes were correct. For a complete accounting of international income inequality across households, within country inequality must also be allowed for, although, given the conflict between national accounts and survey data, with incomes in the latter often growing more slowly, it is not obvious how to do so. Milanovic uses only survey data and finds little change in world inequality in recent decades; procedures that use national accounts statistics (NAS) data, coupled with distributional data from household surveys, find that inequality is declining; see, for example, Maxim Pinkovskiy and Xavier Sala-i-Martin (2009) for a recent example. Neither

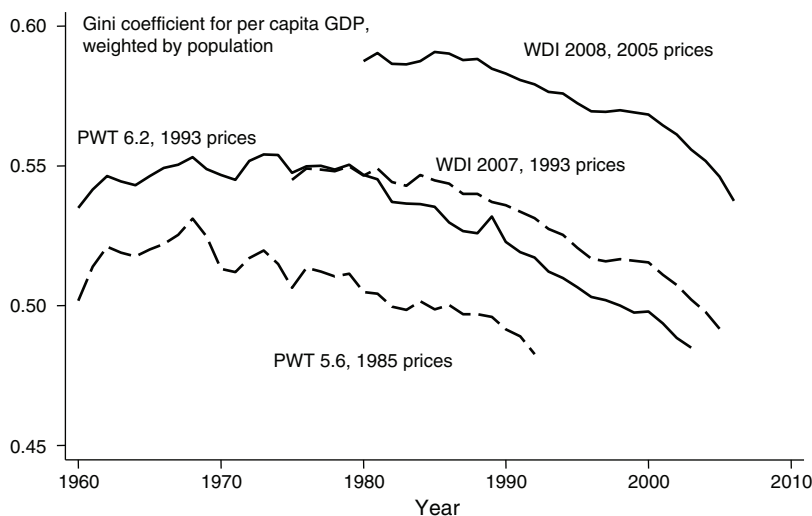


FIGURE 1. GINI COEFFICIENTS FOR POPULATION WEIGHTED NATIONAL INCOMES

procedure by itself is credible: see again Anand and Segal (2008) for a discussion of how little we know. For my purposes here, I note that inequality between countries has dominated the total in recent history (see Francois Bourguignon and Christian Morrison 1998), and within country inequality is not affected by the choice of PPPs—at least if we ignore regional price differences within countries—and so is not my topic here. The graphs in Figure 1 are falling over time in large part because the per capita national incomes of the world's largest countries, India and China, have been growing very rapidly and moving from the bottom of the world income distribution towards its middle.

The top two graphs in the figure show the two time-series using World Bank PPP data before and after the 2005 revision of the ICP. The bottom two graphs use data from the Penn World Table (PWT) and compare version 5.6, which used PPPs referenced on 1985, with version 6.2, which uses PPPs referenced on 1993. This second pair of graphs is chosen to illustrate the 1993 revision to the ICP, which is the one immediately prior to the latest 2005 revision. The Penn World Table uses a different type of PPP than does the data from the World Bank, Geary-Khamis rather than EKS—which tends to understate the level of global inequality because of Gershenkron or substitution bias; see for example Steve Dowrick and Muhammad Akmal (2005). PWT also uses different rules for updating between benchmark years and exercises more freedom than does the World Bank in editing growth rates from country national data, e.g., from China; there are no published World Bank data on a 1985 basis. In consequence, the 1993 inequality numbers from the PWT are not identical to the World Bank estimates, but for my purposes, they are close enough and follow a similar trend. The main point to note is that the revision from 1985 to 1993, like the later revision from 1993 to 2005, moved measured inequality upwards. In fact, the revisions are about the same on both occasions, about 5 percentage points to the Gini coefficient; using Anthony Atkinson's (2003) useful metric, a substantive (as opposed to statistical) offsetting decrease in the Gini coefficient could be accomplished by each country's contributing five percent of its per capita GDP into a common pool which is then equally distributed among all countries, a proposal that dwarfs even the most ambitious programs for international aid.

The World Development Indicators did not provide data on aggregate household consumption in international dollars prior to 2008, so it is not possible to replicate Figure 1 for per capita

consumption. However, World Bank (2008b, pp. 23–5) lists old and new PPPs for household final consumption expenditure in 2005 for 118 countries, and I have used these to calculate the Concept 2 measure of the Gini coefficient for consumption. Here, too, the revision from old to new PPPs led to a substantial increase in measured inequality, with the per capita consumption Gini rising from 0.48 to 0.56.

For my analysis here, it is the widening of measured inequality that is the key effect of the 2005 revision of the ICP. On average, rich nations and poor nations moved further apart. Judged from the rich world, the poor world is poorer than we thought, but judged from the poor world, the rich world is richer than we thought; the two statements are equivalent, and the difference depends on nothing more than the choice of numeraire. As we shall see, the revision to the ICP, in and of itself, had little effect on the world poverty count.

II. The Construction of International Purchasing Power Parity Exchange Rates

In order to understand why the ICP might have an effect on our perceptions of global poverty and inequality, we need to understand something about how it works. This section provides a brief account of relevant issues based on Deaton and Alan Heston (2010); comprehensive accounts of the 2005 round are contained in World Bank (2008a), and in the handbooks on the ICP Web site at the World Bank.

The latest round of the ICP constructed purchasing power parity price indexes for 146 participating countries for 2005. I focus for the moment on the indexes for household consumption that enter into the global poverty calculations. Consumption is divided into 110 “basic headings,” such as rice, bread, clothing, furniture and furnishings, and each basic heading is represented by a list of precisely specified items that lie within it. It is these items that are actually priced by the ICP investigators. The basic headings are the same for all countries, but the detailed lists are different for different regions of the world, of which there were six in 2005; this structure means that the same items are not priced in all 146 countries. For example, fresh mud crabs and fresh squid appear in the Asian list in the fish basic heading, while in Africa, we have Nile perch, catfish, kapenta, and bonga, along with many other fishes. At a first stage, the prices for the detailed lists are aggregated up to give regional “parities” (price indexes or PPPs) for each basic heading. These are in the units of a regional numeraire, e.g., Hong Kong for the Asia/Pacific region, and are the price indexes, with Hong Kong as unity, for each basic heading in each country in Asia/Pacific. For example, fish in Bangladesh is 4.90 taka per Hong Kong dollar, and 4.64 Sri Lankan rupees per Hong Kong dollar in Sri Lanka, while the corresponding figures for gasoline are 2.55 and 3.17. These parities are commodity-specific PPP exchange rates, and there is one for each basic heading in consumption. At a second stage, these parities for basic headings are averaged to give an overall PPP for the country. An important distinction between the first and second stage is that at the latter, the averaging can use expenditures from the NAS to weight together the parities from each basic heading in relation to the amount spent on each. At the first stage, within the basic headings, there are no NAS expenditure data, and aggregation up to the parities for the basic headings must be done without weights.

The procedures outlined above yield a system of PPP exchange rates for each region of the world, with a different numeraire country in each region, not a single global system with a single numeraire currency such as the US dollar. In the 2005 ICP, the “gluing together” of the regions was accomplished using a third stage, the “ring,” in which 18 strategically chosen countries, at least two per region, were asked to price a new, common detailed list of more than 1,100 items. Those prices were then used to link the regions.

Beyond this general outline, I now develop some of the details that I shall need to understand the implications for the measurement of poverty and inequality. At the first, detailed stage,

the ICP collects prices in each country c in region r for basic head i so that there might be $j = 1, \dots, N^r$ items in the basic heading (varieties of fish in the fish basic heading). We can then run a set of country-product dummy (CPD) regressions, one for each basic heading separately by region, of the form

$$(1) \quad \ln p_{ij}^{cr} = \alpha_i^{cr} + \beta_j^{cr} + \varepsilon_{ij}^{cr}$$

in which each price is regressed on a set of commodity (basic heading) and country dummies—with country 1 omitted—so that the parity in region r for basic heading i (with country 1 as numeraire) is given by

$$(2) \quad p_i^{cr} = \exp(\alpha_i^{cr})$$

where the suffix $1r$ identifies the numeraire country in region r . If every country in the region prices everything in the regional list, (2) would be a geometric mean of prices in the basic heading for country c . But not everyone has fresh (or even smoked) bonga in their local market, so that CPD regression works when geometric means would not. Effectively, (1) “fills in” missing values for items whose prices cannot be found, even to the extent of delivering a comparison of two countries neither of which consumed any item purchased in the other, provided that the items appear together in one or more other countries.

Another problematic issue here is that smoked bonga (or indeed Kellogg’s cornflakes, a more important example) may be available but is rarely eaten in country c , so that it is only stocked in specialty shops at very high prices. On the one hand, the ICP wants to specify goods very precisely (the actual specification in the African list is “smoked bonga, in simple wrapping, open product presentation, a piece of approximately 200 grams”) so that we are sure we are matching like with like (and not matching a bonga with just any smoked fish), while, on the other, it wants to avoid comparing commonly consumed items with nonrepresentative, rarely consumed, and expensive ones. To try to handle this tension, the ICP asked enumerators to grade the local representativity of each good on a three point scale, with the intent of down-weighting unrepresentative items. A similar system was successfully operated in Europe in 2005, but the rankings from the other regions were not usable, so no correction was made for high prices of possibly unrepresentative goods.

When we move from parities for basic headings to PPPs for countries, the prices for each basic heading from (3) are combined with expenditures from the national accounts statistics of each country. In the first instance, this is done for each region separately. The theory here is a multilateral extension of standard bilateral price index formulas in which Fisher ideal indexes for each pair of countries are adjusted so as to give a transitive set of international prices indexes, or PPPs; see Deaton and Heston (2010) for an account. The Fisher indexes underlying the multilateral PPPs are “superlative” indexes, Erwin Diewert (1976), which means that there exists a suitably general set of preferences for which they are exact cost-of-living index numbers. Because the index uses weights from both countries, rather than just one or the other, the use of the Fisher index limits the effects that would result from weighting one country’s prices by expenditure patterns that come from a country or countries with very different relative prices and consumption patterns; if countries had identical tastes, these effects would be the familiar substitution or Gershenkron biases.

The third and final stage of the ICP brings the regions together into a single set of basic heading and country parities for the world as a whole with everything expressed in the currency of a single numeraire country, the United States. This is done by pricing a new common “ring” list of more than 1,100 items in each of 18 countries, Brazil, Chile, Cameroon, Egypt, Estonia, United

Kingdom, Hong Kong, Jordan, Japan, Kenya, Sri Lanka, Malaysia, Oman, Philippines, Senegal, Slovenia, South Africa, and Zambia. As suggested by Diewert (2008), these detailed ring prices were used in a modified version of the CPD regression (1)

$$(3) \quad \ln \tilde{p}_{ij}^{cr} - \ln p_i^{cr} = \tilde{\alpha}_i^r + \gamma_i^j + \varepsilon_{ij}^{cr}$$

where \tilde{p}_{ij}^{cr} is the ring price for item j in basic head i in country c in region r , p_i^{cr} is the previously established regional parity for basic head i , from (3), and the right-hand side variables are regional and item dummies. Intuitively, each item price in the ring, \tilde{p}_{ij}^{cr} , the price of shrimp (j) in the fish basic heading (i) in ring country c in region r , is converted to the region numeraire currency (e.g., Hong Kong dollars for Asia/Pacific) using the previously established within-region parity for fish, p_{cr}^i from (2). The regression (3) then picks out the regional log price level for fish, $\tilde{\alpha}_i^r$, e.g., in Hong-Kong dollars per global numeraire, which is the numeraire of the OECD-Eurostat region, the US dollar. We then have a set of all-region parities for each basic heading, $\exp(\tilde{\alpha}_i^r)$, which are unity for the numeraire region (OECD-Eurostat). These “prices,” together with the regional aggregates of expenditures on each basic head expressed in regional numeraire currency, are used in a global multilateral aggregation to give *regional* PPPs, one index for each region, that allow the within-region PPPs to be scaled up to global PPPs.

Four specific aspects of this ICP construction are of concern here. First, the absence of weights within basic headings, including the lack of representativity weights, may result in basic headings being priced using high-priced unrepresentative goods that are rarely consumed in some countries. This is a particular concern for the ring, where identical goods are being matched across very different countries. Second, when country PPPs are constructed from the prices of basic headings, the ICP uses expenditure weights from the national accounts. These weights are appropriate for national income accounting purposes but do not reflect the consumption patterns of people who are poor by global standards. Third, the joining of the regions using the ring information is based on region-wide “super” PPPs in which, for example, there is a price level for Africa or Asia/Pacific relative to the OECD. Measurement errors, or conceptual problems in these indexes—I think of these as “tectonic” price indexes—play an important role in determining global inequality. Fourth is an issue to which I shall return only briefly, which is an urban bias in price collection in some countries, particularly large countries such as China.

The second issue, reweighting for poverty, has been investigated by Deaton and Dupriez (2009) who compute a new set of PPPs for the countries in the poverty counts, using the price data from the 2005 ICP but reweighting by the expenditure patterns of people near the global poverty line in each country. Their main result is that the poverty-weighted PPPs, or P4s, are very close to the usual PPPs, or P3s. Indeed, the main difference between the indexes comes not from the reweighting, but because the P4s use household survey data—the only source of information on the expenditure patterns of the poor—rather than NAS data, and because there are inconsistencies between the two sources. The insensitivity to reweighting may seem surprising given that patterns of consumption for the global poor are very different from the plutocratic patterns of consumption in the national accounts. But that by itself is not enough to generate a difference in the price index or the PPP. Between any pair of countries, the substitution of poverty-line for NAS budget shares will only change the price index between them if the change in budget shares induced by movement down the income distribution is systematically correlated across goods with the price relatives in the two countries. This would happen if we were calculating a price index for a pair of countries, one rich, with low food share and low relative prices of food, and a poor country, with high food share and high relative prices for food (much of food is traded), where the move from a plutocratic to poverty weighting will increase the price level in the poor relative to the rich country. Among a group of countries, all of which are relatively poor, this

effect is typically not pronounced. In effect, although their patterns of demand are different, international comparisons of poor households give much the same result as international comparisons of middle income households.

III. Poverty Lines and Poverty Counts

Most of the increase in the world poverty count with the revision in the ICP can be attributed to two main factors only one of which, the treatment of housing rental, is directly attributable to the ICP itself. Much more important was an increase in the global poverty line. Although the *procedure* that the Bank used to calculate the global line is the same as previously, the line itself has been increased. Both of the factors are of general interest. The treatment of housing is a major concern for virtually all price index work and will be so for future rounds of the ICP. The procedure for calculating the global poverty line will also determine the future path of the global count, and in particular how the global line changes as countries get richer. I deal with each issue in turn.

A. Actual and Imputed Rent for Housing

Housing rental, including imputed rental for owner occupiers, is a difficult (“comparison resistant”) area for the ICP; see Deaton and Heston (2010). For the African and Asian regions, the 2005 ICP had to fall back on an imputation. Because the ICP is primarily focused on obtaining “volume” measures of GDP in international currency, it was decided to impute rental by assuming that, for countries in Asia and Africa, the volume of rental was a fixed proportion of GDP. This is a neutral imputation because, unlike other possibilities, it does not disturb the ratios of GDP across countries. However, what is neutral for quantities is not neutral for prices. The parity for the rental basic heading is derived as the ratio of expenditures on rental (which comes from each country’s national accounts) divided by the assumed quantity, which is taken by the imputation to be proportional to GDP. For countries that make little or no allowance for owner-occupier rentals in their national accounts, this “imputed” parity will be very low. Table 2 shows the parity for housing rentals relative to the overall parity for consumption for the 15 poor countries whose national poverty lines in international currency are averaged to give the \$1.25 global poverty line. I also show India and China for comparison; we do not know that these are correct, but it is reasonable for a non-tradable stock like housing to be cheaper than the average consumption item in those countries.

Several of the rental parities in the 15 countries in Table 2 are too low to be credible. For Ghana, the rental parity is less than five percent of the overall parity; it is 11 percent in Gambia, and 12 percent in Tajikistan. In nine of the 15 countries, the rental parity is less than a half of the overall parity. If we are concerned with the parities and the overall PPP for consumption, rather than with volumes, a neutral assumption would have been one in which the parity for rental was taken to be the same as an average over all consumption, and this can be accomplished by dropping the category and recalculating the PPPs. This raises the PPPs (local currency to US dollars) in Africa and Asia, and more precisely raises the PPPs relative to India of countries in Table 2 whose rental parities are less than 0.602, and relative to China of those whose rental parities are less than 0.832. The Indian or Chinese equivalent of the local poverty lines of those countries is reduced by an increase in their PPPs, which reduces the headcount rates in India and China and, because they are so large, reduces the global poverty count. This (alternative) neutral treatment of housing rental reduces the 2005 poverty count by more than 100 million people.

It should be noted that the treatment of housing is not an error in the ICP, which is focused on producing reasonable estimates of GDP rather than prices or poverty, but it turns into a problem

TABLE 2—RATIO OF PARITY FOR ACTUAL AND IMPUTED RENTAL TO PARITY FOR HOUSEHOLD INDIVIDUAL CONSUMPTION, SELECTED COUNTRIES, 2005

Country	Ratio of parities	Country	Ratio of parities
Chad	0.176	Niger	0.318
Ethiopia	0.520	Rwanda	0.846
Gambia	0.110	Sierra Leone	0.184
Ghana	0.048	Tanzania	0.607
Guinea-Bissau	0.259	Tajikistan	0.119
Malawi	0.150	Uganda	0.581
Mali	0.525		
Mozambique	0.215	China	0.832
Nepal	0.904	India	0.602

Notes: The numbers shown are the ratios of the parity for actual and imputed rents to the parity for household individual consumption. China and India are shown for comparison.

when we move to poverty measurement. The PPPs from the ICP for several of the 15 poverty reference countries are too high, and a failure to make a correction inflates the global poverty count by more than 100 million.

B. Setting the Global Poverty Line

Since 1990, the global poverty line has been set by taking the national poverty lines of a group of the poorest countries in the world, converting them to international dollars using PPPs from the ICP, and taking a simple average. Bringing in more countries is arguably an improvement over using India alone, as in Ahluwalia, Carter, and Chenery (1979), though as these authors argue, the Indian line has been continually debated in a way that is not the case for many other countries in the average. Either way, the aim is to find a line that represents absolute poverty, and the idea is that poverty lines in the poorest countries are a reasonable estimate of what that might be. This idea is further supported by the relationship between the PPP value of national poverty lines and the PPP value of per capita GDP or consumption; national poverty lines do not vary much with levels of living in the poorest countries, but beyond some cutoff—where relative poverty begins to matter as well as absolute poverty—national poverty lines rise with the average level of living; see Ravallion, Gaurav Datt, and Dominique van de Walle (1991), Ravallion (1992) and Atkinson and Bourguignon (2000). This relationship is shown in Figure 2, using data on poverty lines and per capita expenditure levels (from household surveys), assembled by Ravallion, Chen, and Prem Sangraula (2009), who use them to define the current \$1.25 a day poverty line. Their procedure is to define a cutoff, shown as the line AA in Figure 2, below which poverty lines do not decline further, and to compute the global line as the simple average of the poverty lines to the left of AA—which are the poverty lines for the first 15 countries listed in Table 2. This leads to \$1.25 per person per day in 2005 international dollars.

Until the most recent revision, the 1990 line was updated using the same group of reference countries, so that revisions to the global line, for example from \$1.01 to \$1.08 in Table 1, came entirely from revisions in the ICP, from the 1985 benchmark to the 1993 benchmark. In the latest revision, Ravallion, Chen, and Sangraula collected an important new data set of national poverty lines, updated not only the conversion factors from the 2005 revision of the ICP, but also the group of reference countries whose poverty lines go into the global line. One consequence of the change was that India's recent economic growth allowed it to graduate from the poverty-line reference group, so that India's poverty line no longer contributes to the global line. This updating has unfortunate and unintended consequences.

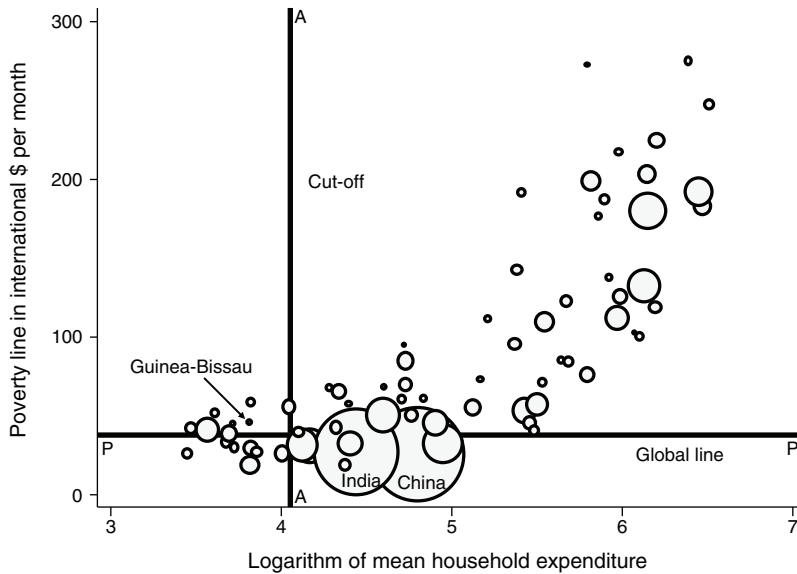


FIGURE 2. THE CONSTRUCTION OF THE GLOBAL POVERTY LINE

I illustrate the argument using Figure 2 and by focusing on two of the marked countries, India (population in 2005 1.1 billion) and tiny Guinea-Bissau (population in 2005 1.6 million). The line PP shows the \$38 a month global line (\$1.25 a day). India's poverty line is a good deal lower than the global line and Guinea-Bissau's a good deal higher. Note that, although there are round to round revisions in the PPPs used to establish the international value of these local lines, the relative position of the lines depends on the domestic procedure that is used to set the national lines in local currency. Over time, as country incomes change, either in reality or through measurement error, some countries will move across the cutoff line AA. Consider first India, which has a low poverty line relative to its living standards, and suppose that India has recently moved across the line from left to right. At the point where it is just on the line, there will be an upward discontinuity in the global poverty line as India drops out of the average, and a corresponding upward discontinuity in the global poverty count, much—but not all—of it from India. Not only is there a discontinuity, but in this particular example, the change is of the wrong sign, with a small *increase* in Indian incomes causing a large *increase* in Indian and other countries' poverty counts. In effect, India and the world have become poorer because India has become richer! Turn now to Guinea-Bissau, and suppose that it becomes richer—through an increase in the world price of cashews, or only apparently so through measurement error—so that it moves across the line AA from left to right. Because Guinea-Bissau has a high poverty line, the global poverty line will decrease, as will global poverty, and this effect turns out to be rather more than 20 times the population of Guinea-Bissau. These problems would not occur if the relationship in Figure 1 were exact, rather than a scatter. With a scatter, the updating procedure violates monotonicity, that if poverty falls in any country included in the counts, and increases nowhere else, global poverty should fall. The current procedure does not satisfy that basic requirement. Nor does it satisfy the property that global poverty should fall by no more than the fall in poverty in individual countries.

An alternative procedure for deriving the global line is to average the available national lines for all of the countries in the counts. This runs the risk of including poverty lines that are too high

TABLE 3—GLOBAL POVERTY LINES IN WORLD RUPEES PER PERSON PER DAY

Source for weights	ICP: NAS	NAS 105	NAS 102	Surveys
<i>P3 Indexes: Plutocratic Purchasing Power Parities</i>				
<i>using unweighted mean of 14 poorest countries as international poverty line</i>				
ICP/Chen-Ravallion	19.49	—	—	—
Fisher multilateral	—	18.98	18.05	17.81
<i>P4 Indexes: Poverty weighted Purchasing Power Parities</i>				
Poverty line selection	Unweighted mean of 14		Weighted mean of 50	
Fisher multilateral	18.31		16.04	

Notes: The first number in the top panel, 19.49, is the Bank's global poverty line of \$38 a month (\$1.25 a day) converted into Indian rupees using the conversion factor of 15.602 which is the PPP for household individual consumption for India relative to the United States taken from the final ICP report. If we calculate this number directly, using the poverty lines of the 15 poorest countries, converted to international dollars using their PPPs for household individual consumption, and taking an unweighted average, we get 1.24 international dollars or 19.34 world rupees. If we exclude Guinea-Bissau from the 15 poorest countries, so as to make the calculations comparable with our own calculations for which we do not have a survey for Guinea-Bissau, we get 1.22 international dollars or 19.06 world rupees. The column headed NAS 105 shows the simple average of poverty lines converted at the PPP for household individual consumption on a NAS basis directly calculated using a one step multilateral set of indexes, and using all 105 basic heads. The column headed NAS 102 is the same as NAS 105, but with three basic heads dropped: FISIM, prostitution, and actual and imputed household rents. The column labeled Surveys also uses 102 basic heads and also uses an aggregate PPP, but uses surveys to estimate aggregate expenditures instead of the national accounts. The bottom panel shows three sets of poverty lines that use P4s for conversion to international rupees; in all cases, the global poverty line is calculated simultaneously with the P4s. In the first column, the global line is calculated as the simple average of the 14 poorest country poverty lines at the final estimates of the P4s. The second column uses poverty lines from 50 countries, weighted by the number of poor in each country at the final global poverty line. See Deaton and Dupriez (2009) for details of calculations.

Source: Adapted from Deaton and Dupriez (2009, Table 11).

to be plausible as minimum subsistence requirements, but this can be dealt with by weighting each line by the number of poor people in the country so that the Indian line—currently excluded from the computation of the \$1.25 line—receives around a third of the total weight. At the same time, very little weight is assigned to tiny countries like Guinea-Bissau, whose national poverty lines or estimated PPPs are thereby prevented from having large effects on the global poverty count by bringing millions of Indians and Chinese in and out of the counts. Without endorsing the quality of the national accounts of large poor countries such as India and China—around which there has been much debate—it is surely unwise to place great weight on the quality of the data from at least some of the countries in Table 2.

Tables 3 and 4 show a range of calculations for the global poverty lines and the associated counts; these are extracted from Deaton and Dupriez (DD) (2009). The first figure in Table 3, 19.49 rupees per person per day, is the \$1.25 poverty line converted to Indian rupees at the ICP Indian rupee to dollar consumption PPP of 15.60. (It should be noted that this is considerably higher than the government of India's own lines for 2004–5, which are 11.77 rupees per day for rural and 17.77 rupees per day for urban.) If we exclude Guinea-Bissau, which in the absence of household survey data cannot be included in the poverty-weighted PPP calculations, but use otherwise identical procedures, the line falls only slightly to R19.06 or \$1.22. If the ICP numbers are replaced by PPPs calculated in a one-step multilateral calculation using the ICP raw data, but not its regional aggregation procedure, the line falls to R18.98. There is a further drop to R18.05 once we exclude three basic headings that are not covered by household surveys, FISIM (financial intermediation services indirectly measured by the profits of banks and insurance

TABLE 4—ALTERNATIVE GLOBAL POVERTY COUNTS AND POVERTY LINES

Number of country lines	Averaging method	PPP weighting type	Formula	Line in \$ or rupees	Line in "star" \$	Number of poor, millions
15	Simple	P3	ICP	\$1.25	—	1,319
14	Simple	P4	GEKS	R18.97	1.064	1,164
50	Poverty	P4	GEKS	R16.04	0.922	874

Notes: The first line shows the official procedure. The global poverty line is a simple average of national poverty lines of 15 countries, using a plutocratic PPP for consumption and incorporating the various aggregation procedures employed in the ICP. The resulting line is \$1.25 per person per day in 2005 international dollars, and the resulting poverty count is 1,319 million. (This number differs from the estimate in Table 1, taken from World Bank, 2008, because of later revisions.) The second row uses 14 of the 15 countries for which there are household surveys, and calculates poverty weighted PPPs, again with a simple average of the 14 national lines. The P4s are calculated using (Gini) EKS-Fisher aggregation and give a global line of 18.97 international rupees per day. The final line uses 50 national lines, which are poverty-count weighted. The conversion of the P4 lines to dollars is carried out using a "star" PPP calculation that uses an average of dollar to international rupee conversions over 62 poor countries; see text and Deaton and Dupriez (2009) for details.

Source: Extracted from Deaton and Dupriez (2009, Tables 11, 14, and 15).

companies), prostitution, and actual and implicit rental for housing. This drop is largely driven by housing rental, and by replacing the neutral volume assumption by the neutral price assumption, as discussed above. Once we switch to surveys as the source for the aggregate weights, but still hold with P3s and with the unweighted average of 14 poverty lines, the line falls to R17.81. The second row shows the effects of moving to poverty-weighted PPPs, first retaining the unweighted 14-country averaging, and second with 50-country poverty-weighted averaging. The first step, replacing the P3s with P4s, leaves the line within the range established in the first row, but the second step, which brings in the Indian and Chinese poverty lines, shows a marked reduction in the global line, to R16.04 which, not surprisingly, lies within the range of the Indian official rural and urban lines.

Table 4 shows the implications of the different lines for the global poverty counts. Given that the United States is not, and cannot be, included in the P4 indexes, there is no US to rupee P4 to convert international rupees to international dollars. Instead, DD (2009, Table 13) calculate "star" PPPs comparing the United States with each of the countries they use, with each country's currency first converted into international rupees using the P4s. Star PPPs are computed one country at a time and are Fisher price indexes between each country and the United States, with poverty line weights for the 62 countries and the national accounts weights for the United States, the idea being to compare market consumption in the United States—the consumption of the rich-world audience to whom the global counts are directed—with the consumption of those near the global line in each country. It turns out that these star rates do not vary much from country to country, so DD use an average to convert the rupee lines back to dollars. Table 4 again starts with the official calculation, somewhat updated from World Bank (2008b), and Table 1, with a global poverty line of \$1.25 in 2005 international dollars and a global count of 1,319 million. The next row shows the global line and counts using P4s and averaging lines over 14 countries; the global line is R18.97 or \$1.064 and the global count falls to 1,164 million. As we have seen in the step by step calculations in Table 3, the main reason for the drop of 155 million in the poverty count is the change in the treatment of housing. The final row again uses P4s, but now with poverty-count weighted averages of 50 national lines. In this final calculation, the global line falls to R16.04 or \$0.922, and the global count to 874 million, two-thirds of the number with which we started, and only 57 million less than would have been estimated using the methods in place before the revision of the ICP.

These calculations show that, provided we use a sensible method for setting the global line, neither the wider collection of poverty lines nor the ICP revision has generated any great need to

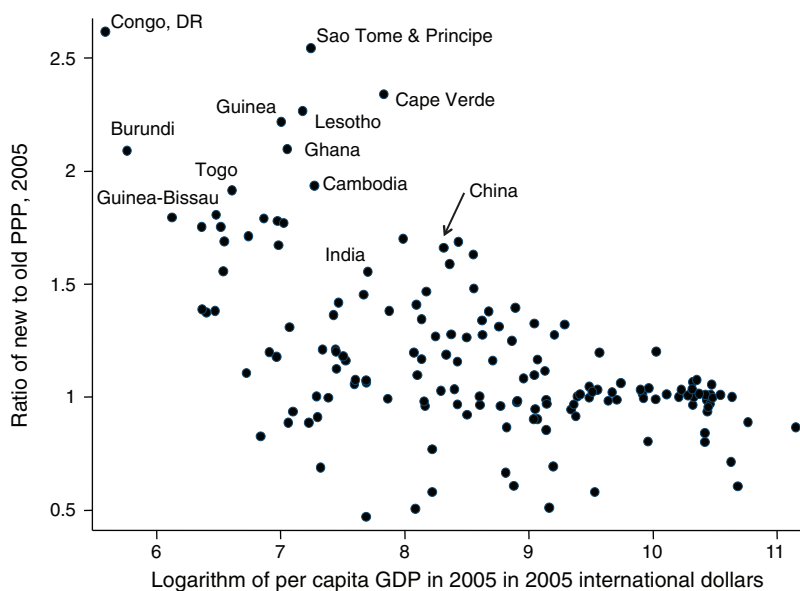


FIGURE 3. RATIOS OF OLD TO NEW PPPs FOR GDP AS A FUNCTION OF PER CAPITA GDP

revise our estimates of the prevalence of global poverty. The belief that the new ICP makes the world poorer comes from missing the fact that the updating procedure had increased the global line, and then attributing the increase in poverty to the ICP revision on the mistaken belief that the dollar-a-day line is actually denominated in dollars. I shall argue below that denominating the global line in dollars would be a good idea, but as long as it is an average of poor country lines, an ICP revision that makes the United States look richer relative to those lines can have no effect on the global poverty counts.

As we saw in Section I, the ICP revision did indeed make the world look more unequal, and it reduced the size of poorer economies relative to richer economies. In that sense, judged from a rich country standpoint, the “developing world” does indeed appear to be poorer. However, global poverty is measured relative to standards set in the poor countries themselves, so that the apparent expansion of inequality cannot, and does not, increase the global poverty count. The count is invariant to any inequality expanding uniform downward rescaling of the international dollar value of consumption in countries in the count relative to the excluded rich countries. Because the expansion in inequality comes about through increases in the measured price levels in poor countries relative to rich countries, this shows up in the poverty calculations through a real decrease in the global poverty line. The \$1.08 in 1993 prices, which would have been \$1.46 in 2005 prices if it had been indexed for the US CPI, is in fact only 92 cents in Table 4. The ratio of \$1.46 to 92c is a measure of the extent to which the ICP has revised upwards the price levels in poor relative to rich countries, which is the issue to which I now turn.

IV. Quality and Inequality Around the World

Understanding why the ICP has increased measured global inequality is more difficult than understanding why measured poverty has changed. Several different factors are at work, and it is not always clear how to assess the contribution of each. Any change from the 1993 ICP involves not only the new procedures, but also the old ones, many of which—especially the linking of

the regions—are known to have been ad hoc and unsatisfactory. I shall focus on the 2005 round, and discuss and quantify the effects of several aspects of the way the indexes were constructed.

Figure 3 shows the revisions to the PPPs in relation to country living standards; it displays the ratio of new to old GDP PPPs for 2005 taken from the 2008 and 2007 World Development Indicators, respectively. A similar graph for the consumption PPPs is given in Ravallion, Chen and Sangraula (2009, Figure 4). Figure 3 shows a strong negative relationship between the upward revision in the PPP for GDP, on the vertical axis, and log GDP per capita on the horizontal axis, which implies that the GDP per capita in international dollars tended to be revised downward in poor countries relative to rich countries, which is why inequality increased. (The negative relationship would be even steeper using the old estimates of per capita GDP, according to which the poorest countries were richer than shown.) Relative to the rich countries, poor countries became poorer; this does not affect global poverty given that global poverty is assessed by poor world standards—but it does increase the estimate of global inequality (and reduce the value of the global poverty line below its value if updated by the US CPI). The figure also shows that the largest revisions are in Africa and Asia; the average ratios of new to old are 1.42 for Africa and 1.33 for Asia-Pacific. The largest seven revisions are in Africa, and there are 18 African countries in the top 25, the others being Cambodia, Nepal, Bangladesh, Philippines, China, Tonga, and Fiji; all except Tonga (which was not benchmarked in the 2005 ICP, but was imputed) are in the Asia-Pacific region. Since Africa and Asia were linked to the other regions using regional PPPs—one for each region, calculated from the ring using Diewert's method—these regional PPPs are a natural point of investigation for investigating the increase in inequality. By the same token, measures of world inequality are sensitive to these regional PPPs; for example, if the revision to the regional PPPs for Africa and Asia-Pacific had been half their actual size, so that the ratios were 1.21 and 1.165 rather than 1.42 and 1.33, half the difference in the standard deviation of logs in per capita GDP would disappear. Without the upward revisions to the African and Asia-Pacific PPPs, there would have been no increase in measured inequality.

A. Country Coverage, Imputations, and Inequality

The 2005 ICP has price data for 146 countries, many of which were imputed in earlier rounds, either by comparison with countries at a similar level of development, or by updating old data, or some combination of the two. For countries without benchmarks, the PPP correction factor, the ratio of PPP to exchange rates, is imputed from a regression of the logarithm of the correction factor on the logarithm of per capita GDP at market prices. (Other variables are also included; see Changqing Sun and Eric Swanson 2009 and Deaton and Heston 2010 for more details.) These imputations target the logarithm of PPP, or equivalently the logarithm of per capita GDP in international dollars, and deliver unbiased estimates in ideal conditions. However, the imputed values will have fewer cross-country variations than the unobserved true values. If $\ln p_y$ is the logarithm of the price of GDP—the ratio of the PPP to the average exchange rate—the regression for imputation in its simplest form is

$$(4) \quad \ln p_y = \beta_0 + \beta_1 \ln y_A + \varepsilon$$

where y_A is per capita GDP in US dollars converted at market exchange rates; using the World Development Indicators, β_1 is typically estimated to be around 0.25. Imputed per capita GDP in international prices is

$$(5) \quad \ln \hat{y}_I = -\hat{\beta}_0 + (1 - \hat{\beta}_1) \ln y_A.$$

Compared with the actual $\ln y_i$, (5) introduces variance through the estimation of the parameters, an effect that is likely to be small, but removes variance because the variance of ε is not included in the imputation. Over successive rounds of the ICP, as fewer PPPs are imputed and more actually measured, measured inequality will rise. The variance of ε estimated from (5) using the pre-revision 2005 data (and including the imputations) is 0.084, which needs to be multiplied by the change in the fraction of covered countries (about 0.25) before it is compared with the increase in the actual variance of log GDP in 2005 of 0.370. So the reduction in the share of countries imputed cannot explain more than a small part of the increase in measured inequality.

B. Comparisons between Rich and Poor Countries in the Ring

The most important question for international comparisons of prices is how to make useful comparisons across widely different countries, in different regions of the world, with different levels of per capita GDP, and with different patterns of consumption and relative prices. The regional structure of successive ICPs means that this issue is most serious when the regions are linked because, in spite of there being a good deal of heterogeneity within some regions, e.g., Hong Kong and Nepal are both in Asia-Pacific in 2005, the widest disparities are across regions. To investigate this further, we need to look in some detail at the operation of the “ring” in the 2005 ICP, the collection of more than 1,000 precisely specified identical items in eighteen countries distributed over the regions.

Past rounds of the ICP have been criticized for not comparing like with like; a cotton shirt, a pair of sandals, or brain surgery in Cameroon or Senegal are plausibly of lower quality than the same items in Japan or Hong Kong, so that comparing the prices of such loosely defined items may overstate living standards in poor countries relative to rich. In the 2005 round, the ring list, like the regional lists, used precisely specified definitions of goods and services in order to avoid quality mismatching, and this is cited as an important reason for the differentially large increase in the PPPs of poor countries: World Bank (2008b, p.1), Ravallion, Chen, and Sangraula (2009, p.178). We can see how this works by looking at the 18 ring countries as a group and calculating a set of PPPs for them using the standard methodology, the CPD regressions (1) and (2) to get parities for each basic heading, followed by aggregation to multilateral PPPs for those 18 countries alone. Because the United States is not a ring country, I select the United Kingdom as base and calculate the “price level” of consumption goods and services included in the ring list for each of the ring countries relative to the United Kingdom; this is defined as the ratio of the PPP in local currency per pound sterling divided by the market exchange rate of local currency per pound sterling. Numbers less than one indicate that a British tourist would find the value of exchange-rate converted pounds worth more than in Britain.

The log price levels are plotted against the logarithm of per capita GDP in Figure 4 which shows that Cameroon, Kenya, Senegal, and Zambia are outliers in having high price levels relative to their levels of per capita GDP; the regression line is fitted to the other 14 ring countries and is close to the comparable regression (4) estimated for all countries in the 2005 ICP. More generally, the PPPs and price levels for the poorest countries are higher when calculated from the ring alone than they are in the ICP itself, where the ring prices work only through the overall regional PPPs. Particularly notable is Cameroon, where the price level from the ring alone, 0.673, is higher than in Estonia and almost as high as in Hong Kong; indeed, if the ring calculations are done using geometric mean price indexes instead of the CPD in (1), the price level in Cameroon is higher than the price level in Hong Kong, an implausible result given the relative levels of GDP in the two countries.

The immediate concern with these high price levels is that, in the attempt to match goods precisely across such diverse countries, the ICP may be pricing high-end “western” goods in

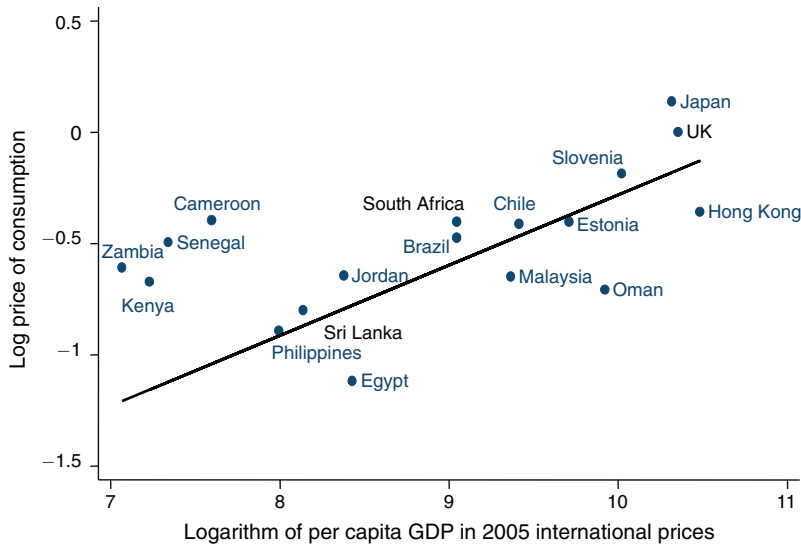


FIGURE 4. PRICES OF CONSUMPTION RELATIVE TO GDP PER CAPITA, 18 RING COUNTRIES

poor African countries where, if they can be found at all, are only available in a few specialty stores in the main city. The specifications in the list make this seem plausible. For example, among the items successfully priced in Cameroon were (a) frozen shrimp (Fish basic heading: 90–120 shrimp per kilo, pre-packed, peeled), (b) Bordeaux red wine (Wine basic heading: Bordeaux *supérieur*, with state certification of origin and quality, alcohol content 11–13 percent, vintage 2003 or 2004, with region and wine farmer listed), (c) a frontloading washing machine (Major household appliances whether electric or not basic heading: capacity 6 kg, energy efficiency class A, electronic program selection, free selectable temperature, spin speed up to 1,200 rpm, medium cluster well-known brand such as Whirlpool), and (d) Brand: Peugeot/ Model: 407 Berline/ Edition: Petrol 2.0 liter 16v 140 CV/ Type: Saloon/sedan/ Engine: 1997 cc; kW/ bhp: 103/ 138/ Doors: 4/ Gears: Manual/ 5/ Standard equipment of basic edition:/ ABS: Yes/ Air condition: Yes/ Automatic climate control: Y.

Listing such specifications is not the same thing as establishing that they are responsible for overstating prices or price levels in some poor countries, let alone that they are responsible for overstating measured income inequality in the world. One way to look more deeply is to examine the bilateral price indexes that go into the multilateral indexes. In this context, the Törnqvist index, which can be decomposed into the contributions from each good, is more useful than the Fisher index, which it closely approximates. If we denote by s_n^c the budget share of good n in country c , the log of the bilateral Törnqvist index for country c with country 1 as base is

$$(6) \quad \ln P_T^c = 0.5 \sum_{n=1}^N (s_n^1 + s_n^c) \ln \frac{P_n^c}{P_n^1}$$

so that we have

$$(7) \quad 0 = 0.5 \sum_{n=1}^N (s_n^1 + s_n^c) \left(\ln \frac{P_n^c}{P_n^1} - \ln P_T^c \right) = \sum_{n=1}^N \gamma_n^c$$

γ_n^c is a measure of how much good n moves the overall index above or below the mean. Table 5 shows the largest positive and negative values for the four outlying African countries in Figure 4.

TABLE 5—MOST INFLUENTIAL BASIC HEADINGS IN PAIRWISE TÖRNQVIST INDEXES:
RING AFRICAN COUNTRIES VERSUS UNITED KINGDOM

	Budget share in country	Budget share in UK	Price ratio relative to UK relative to average	γ influence measure (percent)
<i>Cameroon</i>				
Passenger air travel	0.0112	0.0229	11.6	4.17
Other cereals	0.0578	0.0049	3.06	3.51
Motor cars	0.0052	0.0671	2.19	2.83
Catering services	0.0699	0.1420	0.82	-2.07
Domestic services	0.0136	0.0028	0.05	-2.46
Potatoes	0.1492	0.0022	0.41	-6.67
<i>Kenya</i>				
Motor cars	0.0140	0.0675	2.22	3.38
Telephone and telefax	0.0391	0.0276	2.52	3.06
Other cereals	0.0959	0.0050	1.72	2.58
Hairdressing	0.0109	0.0093	0.22	-1.53
Tobacco	0.0120	0.0292	0.25	-2.94
Vegetables	0.0952	0.0109	0.44	-4.10
<i>Senegal</i>				
Motor cars	0.0129	0.0663	1.95	2.61
Telephone and telefax	0.0629	0.0271	1.60	2.12
Air travel	0.0055	0.0226	3.10	1.58
Fish	0.0376	0.0028	0.39	-1.92
Domestic service	0.0086	0.0028	0.03	-2.08
Tobacco	0.0234	0.0289	0.23	-3.79
<i>Zambia</i>				
Passenger air travel	0.0116	0.0226	11.3	4.33
Motor cars	0.0039	0.0663	2.35	3.35
Telephone and telefax	0.0082	0.0271	3.17	2.18
Cultural services	0.0061	0.0402	0.38	-2.42
Catering services	0.0000	0.1403	0.70	-2.81
Electricity	0.1883	0.0175	0.46	-7.08

Notes: Base country is United Kingdom. The budget shares refer to the share in all ring expenditures of each basic heading including only expenditures for which the price of the basic head is available in both countries. (This set changes across pairs, which explains small differences in UK budget shares when comparing different countries.) The budget shares are also larger than the budget share in *all* consumption expenditure, e.g., the share of passenger air travel in total consumption in Cameroon is 0.0089, not 0.0112. The price ratio relative to United Kingdom relative to average is the ratio of the price of the basic heading in local currency in *c* to its price in the United Kingdom in pounds divided by the overall Törnqvist pairwise PPP from the ring.

The most influential basic headings are mostly those that would be expected. Passenger air travel and automobiles are traded goods and, like telephone services, are heavily taxed in much of Africa. Conversely, services—restaurant meals, hairdressing, and domestic service—are relatively cheap, as are locally grown foods like fresh vegetables. Precise quality matching may contribute to the high prices—for example in the specification of automobiles, and it probably does so in the “other cereals” basic heading (in Table 5 in Kenya, but also important in other countries), which contains a number of items (frosted flakes, Kellogg’s cornflakes, self-rising flour) that may not be representative of African consumption. But Table 5 identifies a different issue that is probably more important, which is that the PPP of a country can be strongly affected by the prices of an item that has little consumption in that country. Air travel accounts for between 0.28 (Kenya) and 0.89 (Cameroon) percent of total consumption in these four countries, and

somewhat more in the part of consumption covered by the ring prices, but superlative indexes use weights from both base and comparison countries so that, when these countries are compared with Britain, the high relative price of air travel—in Cameroon more than 11 times higher than the average Cameroon to British price ratio—is weighted by the *average* of the Cameroon and British share. In consequence, air travel raises the overall (pairwise Törnqvist) price level by 4.2 percent. With Törnqvist indexes, this can happen even when the national accounts report no consumption on the item—see catering services in Zambia in Table 5. The Fisher index is not defined in this case, but the same general phenomenon occurs, with the budget share from the comparison rich country powering up the price level of a rarely consumed commodity in the poor country.

At this point, it is necessary to ask what these indexes are trying to do, why it is a good idea to match goods so precisely, and why these sharply different budget shares are such a problem. On the latter, the theorems underlying superlative indexes, that they provide good approximations to general cost-of-living indexes, require identical homothetic tastes. In that case, the budget shares would be the same in all countries up to price effects, and the second problem would not occur. When tastes are identical but not homothetic, the superlative index approximates the cost of living for a level of living intermediate between the base and the comparison, which, when we are comparing Cameroon or Zambia with Britain or Japan, is not obviously helpful.

The precise matching of quality is also without clear theoretical foundation, though it certainly provides an answer to the question that it asks, which is what is the average price difference for identical items in the two countries. From a welfare perspective, this may not be the answer that we want. Consider, for example, an imaginary broad basic heading called “cereals,” among which there is a staple food in all countries, with some countries choosing wheat, some rice, some maize, and so on. Suppose too, as is broadly true in fact, that the calorie and nutritive content of a kilo is the same, no matter which cereal we choose. In “wheat” countries, rice is rare and expensive, and *vice versa*. To fix ideas, suppose that a kilo of rice is four times the price of a kilo of wheat in a wheat country. Without weights within the basic heading, the price of cereals from a geometric mean index will be twice the price of wheat, even though almost all consumption is of wheat. For welfare purposes, the price of cereals is better represented by the *minimum* price in the basic heading, not its *geometric mean*. Such a procedure might be feasible for foods, where we could plausibly summarize the function of the good by its calorie content, but for other goods is infeasible for the same reason that quality adjustment is so hard in general, that without a “simple repackaging” interpretation of quality differences (Franklin Fisher and Karl Shell 1971)—which is what we can do for the wheat and rice example—there is no noncontroversial way of quality-correcting price differences. Matching identical goods does not do the job if those goods are used in different ways in different countries, and the problem is intractable without some way of mapping (widely different) goods into common functionings.

C. Tectonic Regional PPPs

In practice, Table 5 overstates the influence of individual basic headings on the actual PPPs; pairwise price indexes are not multilateral price indexes, and, beyond that, the ICP uses the ring prices not country by country, but through equation (3), which averages by region the ratios of the ring basic heading prices to the within-region basic heading prices, so that high prices in one country can be offset by low prices elsewhere. Nor does the ring include items that cannot be priced directly, including rental prices of housing. The ICP office makes available the regional price indexes for each basic heading, calculated from (3) for ring items, and by various imputations and use of “reference” prices for the other items, so that I can repeat Table 5 for the bilateral

TABLE 6—MOST INFLUENTIAL BASIC HEADINGS IN PAIRWISE TÖRNQVIST INDEXES:
AFRICA AND ASIA VERSUS OECD

	Budget share in region	Budget share in OECD	Price ratio relative to OECD relative to average	γ influence measure (percent)
<i>Africa</i>				
Pharmaceutical products	0.0062	0.0313	4.25	2.71
Motor cars	0.0090	0.0344	1.70	1.15
Telephone and telefax	0.0080	0.0202	1.99	0.97
Recreational and sports	0.0021	0.0142	2.53	0.76
Furniture and furnishings	0.0063	0.0125	2.04	0.67
Tobacco	0.0164	0.0161	0.55	-0.99
Road travel	0.0233	0.0114	0.53	-1.09
Paramedical services	0.0117	0.0194	0.44	-1.29
Dental services	0.0291	0.0207	0.33	-2.74
Rental of housing	0.1417	0.1589	0.75	-4.24
<i>Asia-Pacific</i>				
Rental of housing	0.1005	0.1589	1.58	5.90
Pharmaceutical products	0.0504	0.0313	1.69	2.15
Gas	0.0139	0.0088	4.86	1.79
Telephone and telefax	0.0374	0.0202	1.45	1.07
Motor cars	0.0035	0.0344	1.61	0.90
Paramedical services	0.0108	0.0194	0.36	-1.53
Dental services	0.0135	0.0207	0.38	-1.65
Social protection	0.0434	0.0359	0.66	-1.67
Road transport	0.0489	0.0114	0.56	-1.73
Hospital services	0.0341	0.0495	0.57	-2.37

Note: See text.

Source: Author's calculations based on ICP data.

price indexes for consumption between Africa and the OECD, and Asia and the OECD. In their adjusted multilateral form, these regional PPPs are the numbers that are used to scale up the within-region PPPs and are obviously important for measuring inequality, because they move whole areas of the world up or down in concert. Table 6, which is in the same format as Table 5, shows the influential basic heads for Africa and for Asia-Pacific relative to the OECD, again using the Törnqvist to illustrate.

Not surprisingly, some of the same goods in Table 5 reappear in Table 6, because their prices are high throughout Africa, but several of the basic headings not included in the ring play a large part in shaping the regional PPPs. Perhaps most worrying is the role of actual and imputed rentals of housing, which is *bottom* of the African list, reducing the African to OECD price level by 4.2 percent, but *top* of the Asia-Pacific list, raising the Asia-Pacific to OECD price level by 5.9 percent. As we have already seen, these housing parities are imputations, and the low figure for Africa comes from the fact that several African countries do not impute rents in their national accounts. The various medical services that also appear at the bottom of the list are almost certainly genuinely cheap, but the quality question again arises because these services are not precisely matched as in the ring list. While precise matching is not the answer, neither is the assumption that the same medical procedure is of the same quality in Zambia and Britain. Pharmaceuticals, which are priced in the ring using precise specifications (acetaminophen, acetylsalicylic acid, aciclovir, amitriptyline, amoxicillin, artesunate, atenolol, and so on through the alphabet, with international, national, and generic brands for each), would have shown up in Table 5 given a few more rows, and, like passenger travel by air, have a tiny budget

share in Africa—although not in Asia—so that their contribution to the regional PPP is being driven by the share in the OECD, not the share in Africa. That pharmaceuticals and motor cars are more or less offset by housing in Africa hardly builds confidence in the numbers, though it is hard to see any evidence in Table 6 that would support the idea that prices in Africa are systematically overstated. The large influence of housing in Asia seems much harder to justify.

Table 6 does not deliver any obvious culprit whose adjustment would have a large effect on global consumption inequality, though it does demonstrate the fragility of the estimates. For example, if we were to scale up all countries in Asia-Pacific by 5.9 percent—corresponding to the assumption that the rental parity is the same as in the OECD—the population weighted international (Concept 2) Gini coefficient falls from 0.543 to 0.537, a substantial shift, but small relative to the change between the two rounds of the ICP. A 5.9 percent boost to all countries in the African region delivers even less, reducing the Gini from 0.543 to 0.542. However, when we assess the overall uncertainty about inequality, there are a number of other factors that need to be taken into account, particularly concerning China and India. China collected only urban or peri-urban prices, and Deaton and Heston, forthcoming, argue that it would be reasonable to increase Chinese GDP by 10 percent on these grounds alone; indeed, both the World Bank's most recent poverty calculations and those by Deaton and Dupriez make a similar correction. There is a conceptually similar, although smaller, urban bias in the prices collected in India. It also turns out that if we replace the ICP calculations by a single global multilateral calculation using the basic heading prices from the ICP, both Indian and Chinese GDP are increased by six percent. If we make a rough correction for *all* of these issues, raising Asia/Pacific and Africa by 5.9 percent, then China by 20 percent (urban bias plus single bias from regional calculation), and India by 15 percent (same reasons as China), the Gini coefficient falls from 0.543 to 0.524. These calculations are for GDP; some of the corrections would have smaller effects for consumption, and some larger.

The calculation in which all the corrections are done independently probably overstates the uncertainty about the Gini coefficient, although I find it hard to feel confident about even that. Yet earlier work by Albert Berry, Bourguignon, and Morrison (1983) also showed that Gini coefficients were quite insensitive to choice of international prices, so it is possible that the large change in measured inequality in the 2005 round does not come from any deficiency in the latest ICP. Still, the uncertainties in Table 6 are disconcerting, particularly because they move whole continents, as are the theoretical and empirical uncertainties about quality correction and weighting that emerge from both Tables 5 and 6. What is disconcerting is not the inability to find a cause or group of causes for the increase in measured inequality, but rather the sense that all of the intercontinental comparisons are fragile and can easily be disturbed by factors that we do not know how to handle.

V. Why Don't We Just Ask People?

I now return to the main theme, the question of poverty measurement. My investigation of the ICP has shown that there are a number of ICP related questions about the poverty counts. But uncertainty about PPPs is not the only source of sensitivity in poverty measures. The national poverty lines are treated as precise cut-offs, but the discussions that lead to them could sometimes be better characterized as specifying only a range of answers. At least some of the poverty lines from the poorest countries owe little to well-informed local democratic discussions, but are set using standard technical rules based on the expenditure levels at which households typically meet expert-specified nutritional norms. Such lines have many conceptual problems—for example, if people do less heavy labor as they become better off, they may need fewer calories, which would lead to an *increase* in a poverty line defined as the level of expenditure at which

fixed “calorie needs” are met, and thus to an apparent increase in poverty, exactly contrary to the true state of affairs; see Deaton and Jean Drèze (2009) for a discussion of the Indian case, and Government of India (2009), which has recently explicitly repudiated the calorie basis for its poverty lines. At the same time, small changes in lines can have large effects on the counts when there is a large fraction of the population near the line; more generally, it is hard to justify treating people so differently, whether or not they happen to fall on one or the other side of a largely arbitrary line.

Poverty counts can also be very sensitive to survey design. Given a global line, the contribution of a country to the world count is the number of people whose household per capita expenditure lies below the local value of the line, a number that is estimated from household surveys. Yet some surveys collect data on income, not on consumption; most countries do not have regular annual surveys; and in many cases, surveys change over time in ways that make the counts non-comparable, for example by being collected in different parts of the year, collecting different lists of goods, or covering different selections of the population. There are long-standing questions about the ability of household surveys to capture consumption or income, even to the extent of showing an increase in poverty when the opposite is true (N. S. Jodha 1988). Survey means are often inconsistent with comparable means from the national accounts, and although there are certainly errors in both, there is widespread skepticism about the accuracy of the survey distributions, with growing concerns in some countries about item and respondent nonresponse. Another example comes from the Indian National Sample Survey which, in the late 1990s, experimented with a seven-day recall period for food and some other items in place of the 30-day period that had long been their standard. This change resulted in a sharp increase in the reported monthly flow of expenditure, enough to remove more than 175 million Indians from the national poverty count; the effect would have been larger still if the poverty line had been mechanically reset using the standard nutritional approach (Deaton 2001, 139–41). Yet recall periods are far from standard across countries, so that we should regard global poverty estimates as very rough and not be surprised by classification errors involving hundreds of millions of people.

The survey based counts cannot satisfy another demand, which is for annual monitoring of world poverty. The World Bank updates its global poverty counts by scaling up the latest survey distributions by growth factors taken from the NAS, but the inconsistencies between survey and NAS growth rates in many countries mean that such estimates are potentially subject to substantial revisions when the new survey data are collected, and it is unclear whether such estimates provide any new information beyond the consumption and income data in the NAS, which are themselves of uneven quality and timeliness. Yet international organizations and NGOs regularly make claims about the effects on world poverty and on world hunger of current events—most recently the rise in food prices and the financial crisis; these claims are essentially extrapolations using evidence whose pertinence can reasonably be questioned.

Given all of the problems, it is worth returning to the idea that people themselves seem to have a very good idea of whether or not they are poor. Indeed, the poverty lines set by politicians and bureaucrats are often informed by community ideas of what is needed to get by, even if they are often subsequently justified by more “scientific” supports. There is also a long and distinguished tradition, based on the work of Bernard van Praag (1968), of turning self-reports about income adequacy into poverty lines; see Theo Goedhart, Victor Halberstadt, Arie Kapteyn, and van Praag (1997), who developed the procedure, which has been used among others by Klaas de Vos and Thesia Garner (1991) to compare the United States and Holland, and extended by Menno Pradhan and Ravallion (2000) to compare Jamaica and Nepal. So there is something to be said for directly asking people around the world how their lives are going, whether they have enough, or whether they are in financial difficulty, and in cases where there are reliable income data, turning those reports into poverty lines. There are two immediate concerns with such measures

in the current context. One is adaptation or the use of relative standards, so that people in rich countries might report outcomes that are much the same as people who are objectively much worse off. This is a serious concern, but it is subject to empirical enquiry, at least in part. The second concern is practical, how and by whom such data might be collected. There currently exist a number of potentially usable international datasets that collect data on various aspects of wellbeing, such as the Eurobarometer, or the World Values Survey. But neither of these has global coverage, and the global data in the World Values Survey is not available every year, nor does it always use nationally representative samples. These deficiencies have been recently addressed by the Gallup organization, which has been running the Gallup World Poll annually since 2006.

The World Poll (WP) aims to collect uniform data every year from a random sample of all of the people of the world. To this end, the WP has posed the same set of questions to randomly selected national samples of adults from 154 countries; in most cases, the sample sizes are around 1,000 individuals, with a few larger and a few smaller. Not all countries are surveyed in every year; there were 130 in 2006, 101 in 2007, 125 in 2008, and 72 (with data processed at the time of writing) in 2009. There are 87 countries that were present in all of the first three years and 50 (so far) in all four. Several of the questions address individual wellbeing, and those that I examine here are as follows: (a) the “ladder” question, which asks people to imagine a ladder whose bottom rung, 0, represents the worst possible life for you, and whose top rung, 10, represents the best possible life for you, and to report on which rung they stand at the present time; (b) Have there been times in the past twelve months when you did not have enough money to buy food that you or your family needed? (yes/no); (c) Which one of these phrases comes closest to your own feelings about your household’s income these days? Living comfortably on present income, Getting by on present income, Finding it difficult on present income, or Finding it very difficult on present income; (d) Are you satisfied or dissatisfied with your standard of living, all of the things that you can buy and do? The WP also has a single income question, but it is frequently missing, and not too much weight should be placed on the nonmissing values, so, rather than calculate poverty lines, I work with the questions directly. It should be noted that the fact that the questions are identical in all countries does not imply that they are not interpreted differently in different countries.

In Deaton (2008), I used the 2006 data to show that there was a close, and approximately linear, relationship between the national average value of the ladder and the logarithm of per capita GDP in international dollars, and Betsy Stevenson and Justin Wolfers (2008) subsequently showed that the relationship also holds within countries using the WP income data. These studies show that it is *not* true that there is (complete) cross-national adaptation of ladder scores; poorer countries, and poorer people, have lower ladder scores so that, for example, the range of national average scores extends from 8.0, 7.8, and 8.0 in Denmark from 2006 to 2008, to 2.8 in Togo, 3.0 in Sierra Leone, and 3.2 in Zimbabwe, all in 2008. The Danish mean is almost three standard deviations above each of these three African means. The relationship between average ladder and the logarithm of per capita GDP in the 2006 data is also present in the 2007 and 2008 rounds. A lack of (at least complete) adaptation also characterizes the other measures. Figure 5 shows a scatter plot of the log of per capita GDP against the fraction of respondents who reported that they were dissatisfied with their standard of living; the lightly-shaded circles are for 2006, the darker circles for 2007, and the darkest circles are for 2008. Table 7 shows the correlations with the log of per capita GDP and the various measures in each year for which they are available and, in the bottom panel, the correlations between growth of per capita GDP and the changes in the measures.

All of the self-reported measures are strongly correlated with log income in levels, which demonstrates that there is either no adaptation or that adaptation is sufficiently limited so that these

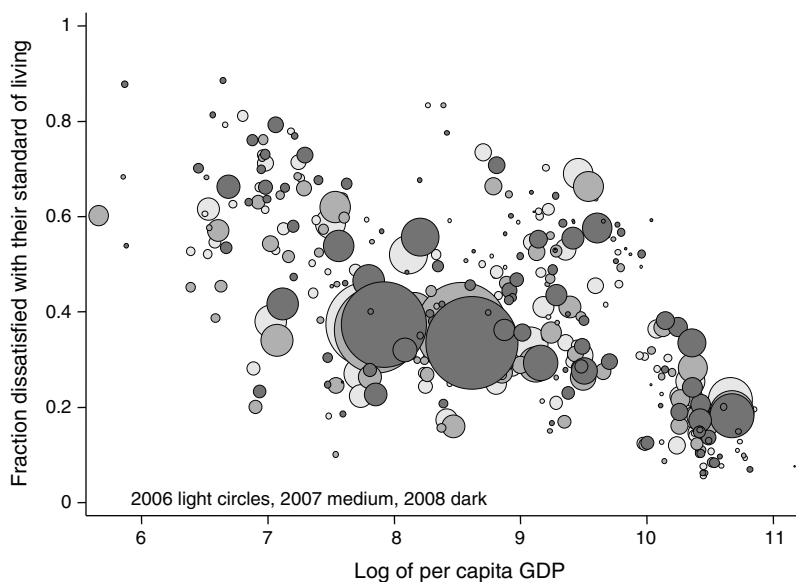


FIGURE 5. FRACTIONS OF PEOPLE REPORTING THAT THEY ARE DISSATISFIED WITH THEIR STANDARD OF LIVING

TABLE 7—CORRELATIONS BETWEEN LOG GDP PER CAPITA AND WELL-BEING MEASURES FROM THE GALLUP WORLD POLL

Levels	2006	2007	2008
Ladder	0.820	0.812	0.831
No money for food	-0.800	-0.762	-0.760
Living standard poor	-0.631	-0.576	-0.642
Difficult or v. difficult to get by	—	-0.654	-0.768
Very difficult to get by	—	-0.632	-0.730
Changes	2007–2006	2008–2007	2008–2006
Ladder	0.058	-0.044	0.049
No money for food	0.239	-0.001	0.107
Living standard poor	0.046	0.004	0.004
Difficult or v. difficult to get by	—	-0.068	—
Very difficult to get by	—	-0.031	—

measures are usefully correlated with standard objective measures of living standards. Changes in self-reported measures are essentially uncorrelated with changes in the log of per capita GDP, year by year or, for the three measures where we have them, over the two year period from 2006 to 2008. This could be interpreted as evidence that the self-reported measures are invalid, and the lack of correlation between changes in the ladder and changes in income is consistent with adaptation in life-evaluation over time (though not apparently over space) as first found by Richard Easterlin (1974). Clearly our three years of data are insufficient to settle the Easterlin hypothesis one way or the other. Both per capita GDP and the Gallup measures are subject to sampling and non-sampling errors, so once again we will need larger and longer-term changes to give a clearer picture. It is also not clear how well-correlated with income we would either expect or want these measures to be. Indeed, if these measures were perfectly correlated with average income, they would not be useful; we are attempting to measure something other than

TABLE 8—GLOBAL AND REGIONAL TRACKING OF LIVING STANDARDS, 2006 TO 2009
(Average scores for ladder, percentages of the population for other measures)

	2006 (base)	2007	2008	2009
<i>World</i>				
Ladder	5.33	5.42	5.36	5.43
No money for food	32.5	26.3	24.9	29.0
Living standards poor	37.9	36.4	38.2	38.6
In difficulty	—	39.3	40.5	43.1
<i>Sub-Saharan Africa</i>				
Ladder	4.25	4.60	4.56	4.57
No money for food	55.0	50.8	56.3	56.8
Living standards poor	61.4	58.8	62.3	62.6
In difficulty	—	58.3	60.3	67.6
<i>South Asia</i>				
Ladder	5.18	5.02	5.01	5.29
No money for food	33.3	26.0	23.6	28.4
Living standards poor	36.0	35.1	38.6	43.0
In difficulty	—	54.7	55.4	58.7

Notes: Except for “In difficulty” for which the base year is 2007, the population weighted global average for 2006 is given in the first column. For “in difficulty” the second column shows the global average for 2007. All columns are the predicted values of a population weighted factor regression in which the relevant measure is regressed on a set of year and country dummies. The World regressions are run for all countries pooled, while the regional regressions pool data over all countries in the region. The ladder on a scale from 0 to 10. The other measures are changes in percentages.

income, something that holds out the hope of measuring the living standards near the bottom of the distribution around the world.

On the supposition that the Gallup measures provide a useful indication of how people see their own lives, I conclude by using them to document changes in perceptions from 2006 to 2009, an exercise that, at the least, illustrates the possibility for real-time global monitoring. In order to use the incomplete 2009 data, and to allow for the fact that not all countries are included in every year, I estimate a population-weighted year and country model in which the national average of each indicator is regressed on a set of country dummies and a set of year dummies, with national population as weights. I do this for the whole world, and for each of the standard World Bank regions of the world; the average predictions for each year then serve as the measures of living standards in the aggregate under consideration. The results are shown in Table 8. For the world as a whole—which, given the population weights, is heavily influenced by India and China—2007 was a better year than 2006; in 2008, more households reported being in difficulty and being dissatisfied with their living standards, and these reports were worse still in 2009. The number without enough money for food continued to fall into 2008, but, like the difficulty and dissatisfaction measures, was worse in 2009 than in 2008. This pattern varies somewhat over the other two regions, with South Asia resembling the world as a whole, and sub-Saharan Africa looking uniformly worse, with 2008 worse than 2007 and 2009 worse still. Without any other measures, I have no way of cross-checking these numbers, but they are certainly not transparently incorrect. They agree with the poverty rankings in placing sub-Saharan Africa in a worse position than South Asia on all measures, and they are consistent with negative effects of increases in world food prices in 2007–08, further exacerbated by the effects of the financial crisis of 2008–09. These effects appear to have been more severe in Africa than in South Asia.

VI. Conclusion

Particularly in my discussion of international inequality, I emphasized the difficulties of making comparisons of real income between countries, especially countries with very different relative prices and economic structures. The difficulties here may be more than practical ones, and perhaps we are aiming too high when we try to construct a real income scale on which every country in the world can be placed. For example, if we look at price indexes for domestic absorption in the United States and Tajikistan, the ratio of the Laspeyres to the Paasche index is 9.6 (Deaton and Heston, forthcoming, Table 2). This is the same as saying that the ratio of US to Tajik domestic absorption is 9.6 times as large when measured in US prices as it is when measured in Tajik prices. The use of superlative multilateral price indexes “solves” this discrepancy, essentially by splitting the (log) difference, but the meaning of such averages is obscure, as we have seen. None of this challenges the usefulness of comparisons between similar countries, such as between the United States and Canada, or the members of the OECD. The comparison between the United States and Tajikistan is perhaps of limited interest, but that is not true of the United States and China or the United States and India, where the Laspeyres to Paasche ratios are “only” 1.66 and 1.61. In 1949, Richard Stone wrote “Why do we want to compare the United States with, say, India or China? What possible interest is there in it? Everybody knows that one country is, in economic terms, very rich and another country very poor; does it matter whether the factor is thirty or fifty or what?” and went on to conclude that “I do not expect a very rapid resolution of the intellectual problems of making welfare comparisons between widely different communities.” While Stone certainly did not anticipate the major developments in the ICP over the last 60 years, his words may have been prophetic, though he would probably have been well satisfied with the range of 1.66 or 1.61 to 1 that we get for India and China. Yet even these margins of uncertainty ignore the other problems of the ICP, such as the treatment of housing, of the productivity of government services, of urban bias in pricing, and the question of what we are doing when we match specifications so carefully.

More formally than Stone, but along the same lines, Amartya Sen (1973, 1976) has suggested that we not try to make complete orderings between countries, let alone compute the ratio-scale real income numbers on which poverty and inequality comparisons rest. Instead, he argued for establishing the partial orderings that can be obtained from pairwise comparisons of countries, establishing that one is richer than the other, or cannot be ranked, using the value of each country’s commodity vector at the other country’s prices. This is a line of research that could usefully be reopened using the data from the ICP.

At the same time, it is clear that PPP comparisons between broadly similar countries, for example within regions, are on relatively firm ground and may be sufficient to support cross-country regressions within subsets of the world, if not for all countries pooled together. PPPs for the poorer countries in Africa or in Asia may be good enough to support global poverty counts, at least provided the uncertainties are recognized. Probably the most urgent area for the poverty counts is not the ICP, but the improvement in the consistency and timeliness of household surveys, and the upgrading of national accounts. We have come a long way since Simon Kuznets (1955) apologized in his Presidential Address to the Association for “the meagerness of reliable information presented,” but there is still much to be done. It is also clear that more use should be made of monitoring surveys, such as the Gallup World Poll, at least as supplementary information, and that the UN and the World Bank would do well to use them in their assessment of progress towards targets such as the Millennium Development Goals.

What about the poverty count that has been a running theme of this lecture? I have shown that the recent 50 percent increase in the counts had very little to do with revisions to the ICP, and nothing at all to do with the fact that the ICP made the developing world as a whole uniformly

poorer relative to the rich world. With no change in the global poverty line, or with a more appropriate updating method, there would have been no sharp discontinuity in the counts. It is possible to argue that the upward revision in *levels* is unimportant, provided that the downward *trend* in poverty remains the same, but I do not believe that this is the case. Because there are nearly 200 million Indians who live on between \$1.00 and \$1.25 a day, the increase in the line adds many more Indians to the counts than it adds Africans. Although the prevalence of poverty remains higher in sub-Saharan Africa, the relative “Indianization” of poverty (or rather “re-Indianization” of poverty, see Table 1) is likely to change the terms of the aid debate. Indeed, the proportional rate of poverty decline in India is lower with the higher baseline, so India is no longer on target to meet the first Millennium Development Goal (Himanshu 2008, Chen and Ravallion, forthcoming). More generally, the *number* of poor people in the world is widely quoted in public debate, so that arbitrary—and poorly understood—changes undermine any usefulness that these numbers might otherwise have had.

How should the global poverty line be set in the future? There are two quite different approaches, depending on whether we take our standard from the poor world, as in the current count, or from the rich world, which is my own preference. In the former, the global line is linked to national lines of poor countries, but given its claims to be an absolute standard, it should not move upwards as countries become richer. One simple possibility would be to use the current Indian line in rupees, or at least a population-weighted average of its rural and urban lines as was done in the first global counts by Ahluwalia, Carter and Chenery (1979). If India revises its poverty line upwards as it gets richer, as has recently been proposed on different grounds by a Government of India Expert Group (2009), the world line should continue to be the original Indian line, and the world count would simply be the number of people in the world living below the poverty line set in India when a large fraction of its population was destitute. If the Indocentric approach is not acceptable, the world poverty line could remain, as now, an average of poverty lines from poor countries, although, once again, those poverty lines need not and should not be changed over time; this is what was done until the current revision. There will still be changes in the global line as successive ICP revisions change the relative PPPs of poor countries, something that cannot be avoided.

The alternative procedure would be to make the global poverty line in fact what it is widely perceived to be, one international dollar per person a day. Whatever its origins, it would in future be updated by the US CPI only, so the global line would be a dollar in 2005 prices. If this rule had been in place, the 2005 revision, by making developing countries poorer relative to the United States, would indeed have made the “developing world” appear to be poorer, and would have avoided much confusion about what had actually happened, not least the confusion within the World Bank itself. Since the dollar a day counts are used almost entirely by rich world NGOs and international organizations, denominating the poverty line in dollars (or perhaps Euros) would better match the measure to its intended audience.

REFERENCES

- Ahluwalia, Montek S., Nicholas G. Carter, and Hollis B. Chenery. 1979. “Growth and Poverty in Developing Countries.” *Journal of Development Economics*, 6(3): 299–341.
- Anand, Sudhir, and Paul Segal. 2008. “What Do We Know about Global Income Inequality?” *Journal of Economic Literature*, 46(1): 57–94.
- Atkinson, Anthony B. 2003. “Income Inequality in OECD Countries: Data and Explanations.” *CESifo Economic Studies*, 49(4): 479–513.
- Atkinson, Anthony B., and François Bourguignon. 2000. “Poverty and Inclusion from a World Perspective.” In *Governance, Equity, and Global Markets*, ed. Pierre-Alan Muet and Joseph E. Stiglitz, 151–66. New York: Oxford University Press.

- Berry, Albert, François Bourguignon, and Christian Morrison.** 1983. "The Level of World Inequality: How Much Can One Say?" *Review of Income and Wealth*, 29(3): 217–41.
- Blank, Rebecca M., and Mark H. Greenburg.** 2008. "Improving the Measurement of Poverty." Brookings Institution Discussion Paper 2008-17.
- Bourguignon, François, and Christian Morrison.** 2002. "Inequality among World Citizens: 1820–1992." *American Economic Review*, 92(4): 727–44.
- Chen, Shaohua, and Martin Ravallion.** 2000. "How Did the World's Poorest Fare in the 1990s?" World Bank Policy Research Working Paper 2409. http://www-wds.worldbank.org/external/default/WDSContentServer/IW3P/IB/200%8/26/000094946_00081406502730/Rendered/PDF/multi_page.pdf.
- Chen, Shaohua, and Martin Ravallion.** Forthcoming. "The Developing World is Poorer than We Thought, But No Less Successful in the Fight against Poverty." *Quarterly Journal of Economics*.
- Citro, Connie F., and Robert T. Michael.** 1995. *Measuring Poverty: A New Approach*. Washington, DC: National Academy Press.
- Deaton, Angus.** 2001. "Counting the World's Poor: Problems and Possible Solutions." *World Bank Research Observer*, 16(2): 125–47.
- Deaton, Angus.** 2005. "Measuring Poverty in a Growing World (or Measuring Growth in a Poor World)." *Review of Economics and Statistics*, 87(1): 1–19.
- Deaton, Angus.** 2008. "Income, Health, and Well-Being around the World: Evidence from the Gallup World Poll." *Journal of Economic Perspectives*, 22(2): 53–72.
- Deaton, Angus, and Jean Drèze.** 2009. "Food and Nutrition in India: Facts and Interpretations." *Economic and Political Weekly*, 44(7): 42–65.
- Deaton, Angus, and Olivier Dupriez.** 2009. "Purchasing Power Parity Exchange Rates for the Global Poor." http://www.princeton.edu/~deaton/downloads/Purchasing_power_parity_exchange_rates_for_global_poor_Nov11.pdf.
- Deaton, Angus, and Alan Heston.** Forthcoming. "Understanding PPPs and PPP-based National Accounts." *American Economic Journal: Macroeconomics*.
- de Vos, Klaas, and Thesia I. Garner.** 1991. "An Evaluation of Subjective Poverty Definitions: Comparing Results from the U.S. and the Netherlands." *Review of Income and Wealth*, 37(3): 267–85.
- Diewert, W. Erwin.** 1976. "Exact and Superlative Index Numbers." *Journal of Econometrics*, 4(2): 115–45.
- Diewert, W. Erwin.** 2008. "New Methodology for Linking the Regions." <http://www.econ.ubc.ca/diewert/dp0807.pdf>.
- Dowrick, Steve, and Muhammad Akmal.** 2005. "Contradictory Trends in Global Income Inequality: A Tale of Two Biases." *Review of Income and Wealth*, 51(2): 201–29.
- Easterlin, Richard.** 1974. "Does Economic Growth Improve the Human Lot? Some Empirical Evidence." In *Nations and Households in Economic Growth: Essays in Honor of Moses Abramovitz*, ed. Paul A. David and Melvin W. Reder. New York: Academic Press.
- Fisher, Franklin, and Karl Shell.** 1971. "Taste and Quality Change in the Pure Theory of the True Cost-of-Living Index." In *Price Indexes and Quality Change*, ed. Zvi Griliches. Cambridge, MA: Harvard University Press.
- Gini, Corrado.** 1924. "Quelques Considerations au Sujet de la Construction des Nombres Indices des Prix et des Questions Analogues." *Metron*, 4(1): 3–162.
- Goedhart, Theo, Victor Halberstadt, Arie Kapteyn, and Bernard van Praag.** 1977. "The Poverty Line: Concept and Measurement." *Journal of Human Resources*, 12(4): 503–20.
- Government of India.** 2009. "Report of the Expert Group to Review the Methodology for Estimation of Poverty." Planning Commission. http://www.indiaenvironmentportal.org.in/files/rep_pov.pdf.
- Himanshu.** 2008. "World Bank's New Poverty Estimates: What are These New Poverty Estimates and What Do They Imply?" *Economic and Political Weekly*, 43(43): 38–43.
- Jodha, N. S.** 1988. "Poverty Debate in India: A Minority View." *Economic and Political Weekly*, 23(45–47): 2421–25, 2427–28.
- Kuznets, Simon.** 1955. "Economic Growth and Income Inequality." *American Economic Review*, 45(1): 1–28.
- Milanovic, Branko.** 2009. "Global Inequality Recalculated: The Effect of New 2005 PPP Estimates on Global Inequality." World Bank Policy Research Working Paper 5061.
- Nagel, Thomas.** 2005. "The Problem of Global Justice." *Philosophy and Public Affairs*, 33(2): 113–47.
- Pinkovskiy, Maxim, and Xavier Sala-i-Martin.** 2009. "Parametric Estimations of the World Distribution of Income." National Bureau of Economic Research Working Paper 15433.
- Pogge, Thomas W.** 2002. *World Poverty and Human Rights: Cosmopolitan Responsibilities and Reforms*. Cambridge, MA: Polity Press.

- Pradhan, Menno, and Martin Ravallion.** 2000. "Measuring Poverty Using Qualitative Perceptions of Consumption Adequacy." *Review of Economics and Statistics*, 82(3): 462–71.
- Ravallion, Martin.** 1992. "Poverty Comparisons: A Guide to Concepts and Methods." Living Standards Measurement Study Working Paper 88.
- Ravallion, Martin, and Shaohua Chen.** 1997. "What Can New Survey Data Tell Us about Recent Changes in Distribution and Poverty?" *World Bank Economic Review*, 11(2): 357–82.
- Ravallion, Martin, Shaohua Chen, and Prem Sangraula.** 2009. "Dollar a Day Revisited." *World Bank Economic Review*, 23(2): 163–84.
- Ravallion, Martin, Gaurav Datt, and Dominique van de Walle.** 1991. "Quantifying Absolute Poverty in the Developing World." *Review of Income and Wealth*, 37(4): 345–61.
- Rawls, John.** 1999. *The Law of Peoples*. Cambridge, MA: Harvard University Press.
- Sen, Amartya K.** 1973. *On Economic Inequality*. Oxford: Clarendon Press.
- Sen, Amartya K.** 1976. "Real National Income." *Review of Economic Studies*, 43(1): 19–39.
- Singer, Peter.** 2002. *One World: The Ethics of Globalization*. New Haven, CT: Yale University Press.
- Stevenson, Betsey, and Justin Wolfers.** 2008. "Economic Growth and Subjective Well-Being: Reassessing the Easterlin Paradox." *Brookings Papers on Economic Activity*, 2008: 1–87.
- Sun, Changqing, and Eric Swanson.** 2009. "Estimation of PPPs for Non-Benchmark Economies for the 2005 ICP Round." *ICP Bulletin*, 6(1): 20–3.
- Tinbergen, Jan, Milton Gilbert, Colin Clark, Richard Stone, Francois Perroux, and S. Kuznets.** 1949. "The Measurement of National Wealth: Discussion." *Econometrica*, 17(Supplement): 255–72.
- Van Praag, Bernard M. S.** 1968. *Individual Welfare Functions and Consumer Behavior*. Amsterdam: North-Holland.
- Wenar, Leif.** 2006. "Why Rawls Is Not a Cosmopolitan Egalitarian." In *Rawls' Law of Peoples: A Realistic Utopia?*, ed. Rex Martin and David Reidy, 95–114. Oxford: Blackwell.
- World Bank.** 1990. *World Development Report 1990: Poverty*. Washington, DC: Oxford University Press.
- World Bank.** 2008a. *Global Purchasing Power Parities and Real Expenditures: 2005 International Comparison Program*. Washington, DC: The World Bank.
- World Bank.** 2008b. *Poverty Data: A Supplement to the World Development Indicators 2008*. Washington, DC: The World Bank.

This article has been cited by:

1. Benoit Decerf. A Meta-Theory for Absolute Poverty Lines **70**, . [[Crossref](#)]
2. David Argente, Chang-Tai Hsieh, Munseob Lee. 2023. Measuring the Cost of Living in Mexico and the United States. *American Economic Journal: Macroeconomics* **15**:3, 43-63. [[Abstract](#)] [[View PDF article](#)] [[PDF with links](#)]
3. Денис Верба, Kseniia Lopukh, Mykhailo Mikhailiuk, Mel'nyk Oleksii. 2023. EVALUATION OF THE KEY COMMODITIES AVAILABILITY FOR UKRAINIAN HOUSEHOLDS WITH DIFFERENT AVERAGE PER CAPITA EQUIVALENT INCOME. *Financial and credit activity problems of theory and practice* **3**:50, 234-245. [[Crossref](#)]
4. Lucie Maruejols, Hanjie Wang, Qiran Zhao, Yunli Bai, Linxiu Zhang. 2023. Comparison of machine learning predictions of subjective poverty in rural China. *China Agricultural Economic Review* **15**:2, 379-399. [[Crossref](#)]
5. Fahd Rehman, Russel J. Cooper. 2023. Effective GDP : A Cross-Country Comparison. *The World Economy* **46**:3, 619-652. [[Crossref](#)]
6. Tendai Chikweche, James Lappeman, Paul Egan. 2023. Researching the marginalised bottom of the pyramid in Africa: Lessons and prospects for inclusive, relevant practices. *International Journal of Market Research* **1**, 147078532211471. [[Crossref](#)]
7. Dean Jolliffe, Christoph Lakner. Measuring Global Poverty in a Changing World 1-25. [[Crossref](#)]
8. Cornelia C. Walther. Veränderung von innen nach außen 1-36. [[Crossref](#)]
9. Shuai Chen, Zhenzheng Meng, Chen Ji, Ying Zhang. 2022. Unintended effects of water regulation on household livelihood: evidence from China. *Applied Economics* **54**:57, 6580-6595. [[Crossref](#)]
10. Eszter Siposné Nándori, Katalin Lipták. 2022. Social Enterprises in the Fight Against Poverty. *Visegrad Journal on Bioeconomy and Sustainable Development* **11**:2, 41-48. [[Crossref](#)]
11. Zsoka Koczan. 2022. Perceptions of economic well-being in the Western Balkans. *Economics of Transition and Institutional Change* **30**:4, 845-867. [[Crossref](#)]
12. MENGGEN CHEN, D. S. PRASADA RAO. 2022. REGIONAL POVERTY PPPS IN CHINA: EXPERIMENTAL ESTIMATION AND APPLICATION. *The Singapore Economic Review* **61**, 1-32. [[Crossref](#)]
13. Tim Goedemé, Benoit Decerf, Karel Van den Bosch. 2022. A new poverty indicator for Europe: The extended headcount ratio. *Journal of European Social Policy* **32**:3, 287-301. [[Crossref](#)]
14. Jourdain C. Lokossou, Hippolyte D. Affognon, Alphonse Singbo, Michel B. Vabi, Ayoni Ogunbayo, Paul Tanzubil, Alcade C. Segnon, Geoffrey Muricho, Haile Desmae, Hakeem Ajeigbe. 2022. Welfare impacts of improved groundnut varieties adoption and food security implications in the semi-arid areas of West Africa. *Food Security* **14**:3, 709-728. [[Crossref](#)]
15. Qing Li, Shuai Yu, Damien Échevin, Min Fan. 2022. Is poverty predictable with machine learning? A study of DHS data from Kyrgyzstan. *Socio-Economic Planning Sciences* **81**, 101195. [[Crossref](#)]
16. Adam Ackerman, Ben Porter. 2022. The effect of combat exposure on financial problems. *International Review of Economics & Finance* **79**, 241-257. [[Crossref](#)]
17. Giulia Chersoni, Nives DellaValle, Magda Fontana. 2022. Modelling thermal insulation investment choice in the EU via a behaviourally informed agent-based model. *Energy Policy* **163**, 112823. [[Crossref](#)]
18. Robert Inklaar, Ryan Marapin, Pieter Woltjer, Marcel Timmer. Inconsistencies in Cross-Country Price Comparisons over Time: Patterns and Facts 633-663. [[Crossref](#)]

19. Marcos Aurélio Brambilla, Marina Silva da Cunha. 2021. Pobreza multidimensional no Brasil, 1991, 2000 e 2010: uma abordagem espacial para os municípios brasileiros. *Nova Economia* 31:3, 869-898. [[Crossref](#)]
20. Fengqin Liu, Li Li, YunQian Zhang, Quang-Thanh Ngo, Wasim Iqbal. 2021. RETRACTED ARTICLE: Role of education in poverty reduction: macroeconomic and social determinants form developing economies. *Environmental Science and Pollution Research* 28:44, 63163-63177. [[Crossref](#)]
21. Boško Mijatović, Branko Milanović. 2021. The real urban wage in an agricultural economy without landless farmers: Serbia, 1862–1910 †. *The Economic History Review* 74:2, 424-448. [[Crossref](#)]
22. Eilya Torshizian, Arthur Grimes. 2021. Household Crowding Measures: A Comparison and External Test of Validity. *Journal of Happiness Studies* 22:4, 1925-1951. [[Crossref](#)]
23. John H. McKendrick. Poverty Lines and Their Role in Reducing Poverty 663-675. [[Crossref](#)]
24. Muhammad Mohsin, Nadeem Iqbal, Farhad Taghizadeh-Hesary, Robina Iram. Measuring the Performance of Poverty Reduction Programs in Rural Pakistan 165-182. [[Crossref](#)]
25. Mohamed Samy-Kamal. 2021. Prices in the Egyptian seafood market: insights for fisheries management and food security. *Fisheries Research* 233, 105764. [[Crossref](#)]
26. Jessie Handbury. 2021. Are Poor Cities Cheap for Everyone? Non-Homotheticity and the Cost of Living Across U.S. Cities. *Econometrica* 89:6, 2679-2715. [[Crossref](#)]
27. Chenhong Peng, Paul S. F. Yip, Yik Wa Law. 2020. What Factors Beyond Economic Poverty Lead People in High-income Societies to Feel Poor? Evidence from Hong Kong. *Social Indicators Research* 152:3, 991-1027. [[Crossref](#)]
28. Olle Hammar, Daniel Waldenström. 2020. Global Earnings Inequality, 1970–2018. *The Economic Journal* 130:632, 2526-2545. [[Crossref](#)]
29. Angus Deaton, Gordon Rausser, David Zilberman. 2020. A Conversation with Angus Deaton. *Annual Review of Resource Economics* 12:1, 1-22. [[Crossref](#)]
30. Joseph Deutsch, Jacques Silber, Guanghua Wan, Mengxue Zhao. 2020. Asset indexes and the measurement of poverty, inequality and welfare in Southeast Asia. *Journal of Asian Economics* 70, 101220. [[Crossref](#)]
31. Martin Ravallion. 2020. On Measuring Global Poverty. *Annual Review of Economics* 12:1, 167-188. [[Crossref](#)]
32. Robert C. Allen. 2020. Poverty and the Labor Market: Today and Yesterday. *Annual Review of Economics* 12:1, 107-134. [[Crossref](#)]
33. Manuela Coromaldi. 2020. The impact of weather fluctuations and climate shocks on farmers' welfare: insights from rural Ethiopia. *International Journal of Environmental Studies* 77:4, 619-635. [[Crossref](#)]
34. Hanjie Wang, Qiran Zhao, Yunli Bai, Linxiu Zhang, Xiaohua Yu. 2020. Poverty and Subjective Poverty in Rural China. *Social Indicators Research* 150:1, 219-242. [[Crossref](#)]
35. Arthur Grimes, Sean Hyland. 2020. Measuring cross-country material wellbeing and inequality using consumer durables. *Scottish Journal of Political Economy* 67:3, 248-271. [[Crossref](#)]
36. Paul Johnson, Chris Papageorgiou. 2020. What Remains of Cross-Country Convergence?. *Journal of Economic Literature* 58:1, 129-175. [[Abstract](#)] [[View PDF article](#)] [[PDF with links](#)]
37. Martin Ravallion. 2020. Book review of Measuring Poverty around the World. *The Journal of Economic Inequality* 18:1, 131-136. [[Crossref](#)]
38. Olufemi Daniel Bolarinwa, Kolawole Ogundari, Adebayo B. Aromolaran. 2020. Intertemporal evaluation of household food security and its determinants: evidence from Rwanda. *Food Security* 12:1, 179-189. [[Crossref](#)]
39. Cornelia C. Walther. Change from the Inside Out 1-31. [[Crossref](#)]

40. John H. McKendrick. Poverty Lines and Their Role in Reducing Poverty 1-14. [[Crossref](#)]
41. Edvard Jakopin. 2020. Economic performance of the middle-class transition in Serbia. *Ekonomika preduzeća* **68**:3-4, 163-179. [[Crossref](#)]
42. Paula-Andrea Nieto-Aleman, Jose-Maria Garcia-Alvarez-Coque, Norat Roig-Tierno, Francisco Mas-Verdú. 2019. Factors of regional poverty reduction in Colombia: Do institutional conditions matter?. *Social Policy & Administration* **53**:7, 1045-1063. [[Crossref](#)]
43. Thomas Carver, Arthur Grimes. 2019. Income or Consumption: Which Better Predicts Subjective Well-Being?. *Review of Income and Wealth* **65**:S1. . [[Crossref](#)]
44. Rutger Hoekstra. Replacing GDP by 2030 **106**, . [[Crossref](#)]
45. James Lappeman, Kristin Ransome, Zach Louw. 2019. Not one segment: using global and local BoP characteristics to model country-specific consumer profiles. *European Business Review* **31**:3, 317-336. [[Crossref](#)]
46. Jeetendra Prakash Aryal, Khondoker Abdul Mottaleb, Dil Bahadur Rahut. 2019. Untangling gender differentiated food security gaps in Bhutan: An application of exogenous switching treatment regression. *Review of Development Economics* **23**:2, 782-802. [[Crossref](#)]
47. Tahir Mahmood, Xiaohua Yu, Stephan Klasen. 2019. Do the Poor Really Feel Poor? Comparing Objective Poverty with Subjective Poverty in Pakistan. *Social Indicators Research* **142**:2, 543-580. [[Crossref](#)]
48. James Lappeman, Joel Chigada, Pragasen Pillay. 2019. Rethinking share-of-wallet at the bottom of the pyramid: using financial diaries to observe monthly category trade-offs. *Journal of Consumer Marketing* **36**:1, 50-63. [[Crossref](#)]
49. Peter Edward, Andy Sumner. Global Poverty by Different Poverty Lines Since the Cold War 21-44. [[Crossref](#)]
50. Satya R. Chakravarty, Nachiketa Chattopadhyay, Joseph Deutsh, Zoya Nissanov, Jacques Silber. Reference Groups and the Poverty Line: An Axiomatic Approach with an Empirical Illustration 39-61. [[Crossref](#)]
51. Faisal Chaudhry. 2019. Property as Rent. *SSRN Electronic Journal* **700**. . [[Crossref](#)]
52. Ingvild Almås, Anders Kjelsrud, Rohini Somanathan. 2019. A Behavior-Based Approach to the Estimation of Poverty in India. *The Scandinavian Journal of Economics* **121**:1, 182-224. [[Crossref](#)]
53. Julius Manda, Cornelis Gardebroek, Elias Kuntashula, Arega D. Alene. 2018. Impact of improved maize varieties on food security in Eastern Zambia: A doubly robust analysis. *Review of Development Economics* **22**:4, 1709-1728. [[Crossref](#)]
54. Paula Andrea Nieto Alemán, Norat Roig-Tierno, Francisco Mas-Verdú, José María García Álvarez-Coque. 2018. Multidimensional paths to regional poverty: a Fuzzy-set qualitative comparative analysis of Colombian departments. *Journal of Human Development and Capabilities* **19**:4, 499-520. [[Crossref](#)]
55. Leonard Goff, John F. Helliwell, Guy Mayraz. 2018. INEQUALITY OF SUBJECTIVE WELL-BEING AS A COMPREHENSIVE MEASURE OF INEQUALITY. *Economic Inquiry* **56**:4, 2177-2194. [[Crossref](#)]
56. John A. Bishop, Jonathan M. Lee, Lester A. Zeager. 2018. U.S. Income Comparisons with Regional Price Parity Adjustments. *The B.E. Journal of Economic Analysis & Policy* **18**:4. . [[Crossref](#)]
57. Zhou Xun, Michel Lubrano. 2018. A Bayesian Measure of Poverty in the Developing World. *Review of Income and Wealth* **64**:3, 649-678. [[Crossref](#)]
58. Gordon Anderson, Maria Pittau, Roberto Zelli, Jasmin Thomas. 2018. Income Inequality, Cohesiveness and Commonality in the Euro Area: A Semi-Parametric Boundary-Free Analysis. *Econometrics* **6**:2, 15. [[Crossref](#)]

59. Edmore Mahembe, Nicholas M. Odhiambo. 2018. The Dynamics of Extreme Poverty in Developing Countries. *Studia Universitatis „Vasile Goldis” Arad – Economics Series* 28:2, 18-35. [[Crossref](#)]
60. Amita Majumder, Ranjan Ray, Sattwik Santra. 2018. Sensitivity of global and regional poverty rates to alternative purchasing power parities. *Indian Growth and Development Review* 11:1, 34-56. [[Crossref](#)]
61. Maryam Abdu, Enrique Delamonica. 2018. Multidimensional Child Poverty: From Complex Weighting to Simple Representation. *Social Indicators Research* 136:3, 881-905. [[Crossref](#)]
62. Peter Edward, Andy Sumner. 2018. Global poverty and inequality: are the revised estimates open to an alternative interpretation?. *Third World Quarterly* 39:3, 487-509. [[Crossref](#)]
63. Kateryna Ivanivna Antoniuk, Dmytro Anatolievich Antoniuk, Liudmyla Mykhailivna Bukharina. 2018. STRUCTURAL ANALYSIS OF CATEGORY APPARATUS OF CONSUMPTION IN THE SUSTAINABLE DEVELOPMENT SYSTEM. *SCIENTIFIC BULLETIN OF POLISSIA* 1:2(14), 136-140. [[Crossref](#)]
64. Jayati Ghosh. 2018. A note on estimating income inequality across countries using PPP exchange rates. *The Economic and Labour Relations Review* 29:1, 24-37. [[Crossref](#)]
65. Peter Saunders. 2018. Monitoring and addressing global poverty: A new approach and implications for Australia. *The Economic and Labour Relations Review* 29:1, 9-23. [[Crossref](#)]
66. Xiaohua Yu. 2018. Engel curve, farmer welfare and food consumption in 40 years of rural China. *China Agricultural Economic Review* 10:1, 65-77. [[Crossref](#)]
67. Aasha Kapur Mehta, Shashanka Bhide. Poverty Trends and Measures 9-36. [[Crossref](#)]
68. Ranjan Ray. Using PPPs in Calculation of Global and Regional Poverty Rates 253-287. [[Crossref](#)]
69. Elena Ianchovichina. Welfare Dynamics: Definitions and Measurement 41-57. [[Crossref](#)]
70. Robert C. Allen. 2017. Absolute Poverty: When Necessity Displaces Desire. *American Economic Review* 107:12, 3690-3721. [[Abstract](#)] [[View PDF article](#)] [[PDF with links](#)]
71. Sara Ayllón, Alessio Fusco. 2017. Are income poverty and perceptions of financial difficulties dynamically interrelated?. *Journal of Economic Psychology* 61, 103-114. [[Crossref](#)]
72. Petr Janský, Dominika Kolcunová. 2017. Regional differences in price levels across the European Union and their implications for its regional policy. *The Annals of Regional Science* 58:3, 641-660. [[Crossref](#)]
73. M. Yu. Malkina. 2017. Relationship between normal and excessive personal income differentiation and regional economic performance indicators. *Regional Research of Russia* 7:2, 153-161. [[Crossref](#)]
74. Caterina Giusti, Lucio Masserini, Monica Pratesi. 2017. Local Comparisons of Small Area Estimates of Poverty: An Application Within the Tuscany Region in Italy. *Social Indicators Research* 131:1, 235-254. [[Crossref](#)]
75. Andrew Kerner, Morten Jerven, Alison Beatty. 2017. Does it pay to be poor? Testing for systematically underreported GNI estimates. *The Review of International Organizations* 12:1, 1-38. [[Crossref](#)]
76. Angus Deaton, Bettina Aten. 2017. Trying to Understand the PPPs in ICP 2011: Why Are the Results So Different?. *American Economic Journal: Macroeconomics* 9:1, 243-264. [[Abstract](#)] [[View PDF article](#)] [[PDF with links](#)]
77. Robert Inklaar, D.S. Prasada Rao. 2017. Cross-Country Income Levels over Time: Did the Developing World Suddenly Become Much Richer?. *American Economic Journal: Macroeconomics* 9:1, 265-290. [[Abstract](#)] [[View PDF article](#)] [[PDF with links](#)]
78. Bram Tucker. From Risk and Time Preferences to Cultural Models of Causality: On the Challenges and Possibilities of Field Experiments, with Examples from Rural Southwestern Madagascar 61-114. [[Crossref](#)]

79. Simone Verkaart, Bernard G. Munyua, Kai Mausch, Jeffrey D. Michler. 2017. Welfare impacts of improved chickpea adoption: A pathway for rural development in Ethiopia?. *Food Policy* **66**, 50-61. [[Crossref](#)]
80. Satya R. Chakravarty, Nachiketa Chattopadhyay, Joseph Deutsch, Zoya Nissanov, Jacques Silber. Reference Groups and the Poverty Line: An Axiomatic Approach with an Empirical Illustration 1-27. [[Crossref](#)]
81. Sanghamitra Bandyopadhyay. The Vulnerable Are Not (Necessarily) the Poor 29-57. [[Crossref](#)]
82. Fadi Hassan. 2016. The price of development: The Penn–Balassa–Samuelson effect revisited. *Journal of International Economics* **102**, 291-309. [[Crossref](#)]
83. John Gibson. 2016. Poverty Measurement: We Know Less than Policy Makers Realize. *Asia & the Pacific Policy Studies* **3:3**, 430-442. [[Crossref](#)]
84. Alessio Fusco. 2016. The Dynamics of Perceived Financial Difficulties. *Journal of Happiness Studies* **17:4**, 1599-1614. [[Crossref](#)]
85. Timothy Besley. 2016. The Contributions of Angus Deaton. *The Scandinavian Journal of Economics* **118:3**, 375-396. [[Crossref](#)]
86. Angus Deaton. 2016. Measuring and Understanding Behavior, Welfare, and Poverty. *American Economic Review* **106:6**, 1221-1243. [[Citation](#)] [[View PDF article](#)] [[PDF with links](#)]
87. Nanak Kakwani, Hyun H. Son. 2016. Global poverty estimates based on 2011 purchasing power parity: where should the new poverty line be drawn?. *The Journal of Economic Inequality* **14:2**, 173-184. [[Crossref](#)]
88. Martin Ravallion. 2016. Toward better global poverty measures. *The Journal of Economic Inequality* **14:2**, 227-248. [[Crossref](#)]
89. Stephan Klasen, Tatyana Krivobokova, Friederike Greb, Rahul Lahoti, Syamsul Hidayat Pasaribu, Manuel Wiesenfarth. 2016. International income poverty measurement: which way now?. *The Journal of Economic Inequality* **14:2**, 199-225. [[Crossref](#)]
90. Nora Lustig, Jacques Silber. 2016. Introduction to the Special Issue on Global Poverty Lines. *The Journal of Economic Inequality* **14:2**, 129-140. [[Crossref](#)]
91. Francisco H. G. Ferreira, Shaohua Chen, Andrew Dabalen, Yuri Dikhanov, Nada Hamadeh, Dean Jolliffe, Ambar Narayan, Espen Beer Prydz, Ana Revenga, Prem Sangraula, Umar Serajuddin, Nobuo Yoshida. 2016. A global count of the extreme poor in 2012: data issues, methodology and initial results. *The Journal of Economic Inequality* **14:2**, 141-172. [[Crossref](#)]
92. Dean Jolliffe, Espen Beer Prydz. 2016. Estimating international poverty lines from comparable national thresholds. *The Journal of Economic Inequality* **14:2**, 185-198. [[Crossref](#)]
93. Enrique Delamonica. 2016. Transformational Growth and Poverty: An Evolutionary Approach for Inter-Country and Inter-Temporal Comparisons of Poverty Incidence. *Applied Research in Quality of Life* **11:2**, 387-411. [[Crossref](#)]
94. Florence Bonnet, Uma Rani, Marianne Furrer. 2016. Poverty and the world of work: A global overview of trends. *World Employment and Social Outlook 2016:2*, 6-43. [[Crossref](#)]
95. Kathleen Beegle, Luc Christiaensen, Andrew Dabalen, Isis Gaddis. The State of Data for Measuring Poverty 25-56. [[Crossref](#)]
96. Michail Moatsos. 2016. Global Absolute Poverty: Behind the Veil of Dollars. *Journal of Globalization and Development* **7:2**. . [[Crossref](#)]
97. Timm Betz, Andrew Kerner. 2016. Real Exchange Rate Overvaluation and WTO Dispute Initiation in Developing Countries. *International Organization* **70:4**, 797-821. [[Crossref](#)]
98. Nanak Kakwani, Hyun Hwa Son. Global Poverty Counts 229-251. [[Crossref](#)]

99. Christoph Lakner, Branko Milanovic. 2016. Global Income Distribution: From the Fall of the Berlin Wall to the Great Recession. *The World Bank Economic Review* 30:2, 203-232. [[Crossref](#)]
100. Chris Hoy, Andy Sumner. 2016. Global Poverty and Inequality: Is There New Capacity for Redistribution in Developing Countries?. *Journal of Globalization and Development* 7:1. . [[Crossref](#)]
101. Thomas Goda. 2016. Global trends in relative and absolute income inequality. *Ecos de Economía* 20:42, 46-69. [[Crossref](#)]
102. Victor A. Beker. 2016. Growth, Inequality and Poverty: What Do We Know?. *SSRN Electronic Journal* . [[Crossref](#)]
103. Sara Aylln, Alessio Fusco. 2016. Are Income Poverty and Perceptions of Financial Difficulties Dynamically Interrelated?. *SSRN Electronic Journal* . [[Crossref](#)]
104. Brian A'Hearn, Giovanni Vecchi. 2016. On Historical Household Budgets. *SSRN Electronic Journal* . [[Crossref](#)]
105. Tom Carver, Arthur Grimes. 2016. Income or Consumption: Which Better Predicts Subjective Wellbeing?. *SSRN Electronic Journal* . [[Crossref](#)]
106. Chris Hoy. 2016. Gasoline, Guns, and Giveaways: Is There New Capacity for Redistribution to End Three Quarters of Global Poverty?. *SSRN Electronic Journal* . [[Crossref](#)]
107. Stephan Klasen. 2016. An Asian Poverty Line? Issues and Options. *SSRN Electronic Journal* . [[Crossref](#)]
108. Zsoka Koczan. 2016. Being Poor, Feeling Poorer: Inequality, Poverty and Poverty Perceptions in the Western Balkans. *IMF Working Papers* 16:31, 1. [[Crossref](#)]
109. Yoko Akachi, David Canning. 2015. Inferring the economic standard of living and health from cohort height: Evidence from modern populations in developing countries. *Economics & Human Biology* 19, 114-128. [[Crossref](#)]
110. Kristof Bosmans, Koen Decancq, Erwin Ooghe. 2015. What do normative indices of multidimensional inequality really measure?. *Journal of Public Economics* 130, 94-104. [[Crossref](#)]
111. Nicholas Oulton. 2015. Understanding the space-time (in)consistency of the national accounts. *Economics Letters* 132, 21-23. [[Crossref](#)]
112. James Thurlow, Danielle Resnick, Dumebi Ubogu. 2015. Matching Concepts With Measurement: Who Belongs to Africa's Middle Class?. *Journal of International Development* 27:5, 588-608. [[Crossref](#)]
113. Sabina Alkire, Jose Manuel Roche, Suman Seth, Andrew Sumner. 2015. Identifying the Poorest People and Groups: Strategies Using the Global Multidimensional Poverty Index. *Journal of International Development* 27:3, 362-387. [[Crossref](#)]
114. David S. Johnson, Timothy M. Smeeding. Income Distribution and Inequality: Measurement Issues 732-738. [[Crossref](#)]
115. Koen Decancq, Marc Fleurbaey, Erik Schokkaert. Inequality, Income, and Well-Being 67-140. [[Crossref](#)]
116. Facundo Alvaredo, Leonardo Gasparini. Recent Trends in Inequality and Poverty in Developing Countries 697-805. [[Crossref](#)]
117. Sudhir Anand, Paul Segal. The Global Distribution of Income 937-979. [[Crossref](#)]
118. Peter Edward, Andy Sumner. 2015. New Estimates of Global Poverty and Inequality: How Much Difference Do Price Data Really Make?. *SSRN Electronic Journal* . [[Crossref](#)]
119. Sanjay G. Reddy, Ingrid Harvold Kvangraven. 2015. Global Development Goals: If at All, Why, When and How?. *SSRN Electronic Journal* . [[Crossref](#)]
120. Martin Ravallion. 2015. Toward Better Global Poverty Measures. *SSRN Electronic Journal* . [[Crossref](#)]

121. Sanjay G. Reddy, Rahul Lahoti. 2015. \$1.90 Per Day: What Does it Say?. *SSRN Electronic Journal* . [[Crossref](#)]
122. Martin Hall. Against Inequality: Towards a Curriculum for Social and Environmental Innovation 213-232. [[Crossref](#)]
123. . Global Profiles of Poverty and Shared Prosperity, Data, and Measurement Issues 225-261. [[Crossref](#)]
124. . Overview 1-27. [[Crossref](#)]
125. John Cockburn, Jean-Yves Duclos, Agnès Zabsonré. 2014. Is global social welfare increasing? A critical-level enquiry. *Journal of Public Economics* **118**, 151-162. [[Crossref](#)]
126. Andreas Bergh, Therese Nilsson. 2014. Is Globalization Reducing Absolute Poverty?. *World Development* **62**, 42-61. [[Crossref](#)]
127. Eszter Siposne Nandori. 2014. Interpretation of Poverty in St. Louis County, Minnesota. *Applied Research in Quality of Life* **9**:3, 479-503. [[Crossref](#)]
128. Matthew J. Fell, Tom Hoyle, Mekonen E. Abebe, Yegeremu Kebede, Yohannes D. Medhin, Fikre A. Hiwot, Taye H. Cifeta, Ibrahim M. Ali, Mark McGurk. 2014. The impact of a single surgical intervention for patients with a cleft lip living in rural Ethiopia. *Journal of Plastic, Reconstructive & Aesthetic Surgery* **67**:9, 1194-1200. [[Crossref](#)]
129. Joshua Greenstein, Ugo Gentilini, Andy Sumner. 2014. National or International Poverty Lines or Both? Setting Goals for Income Poverty after 2015. *Journal of Human Development and Capabilities* **15**:2-3, 132-146. [[Crossref](#)]
130. Isis Gaddis, Stephan Klasen. 2014. Economic development, structural change, and women's labor force participation:. *Journal of Population Economics* **27**:3, 639-681. [[Crossref](#)]
131. Dominick Salvatore, Fred Campano. 2014. The income shortfall in the least developed countries. *Journal of Policy Modeling* **36**:4, 758-766. [[Crossref](#)]
132. M. Fleurbaey, K. Tadenuma. 2014. Universal Social Orderings: An Integrated Theory of Policy Evaluation, Inter-Society Comparisons, and Interpersonal Comparisons. *The Review of Economic Studies* **81**:3, 1071-1101. [[Crossref](#)]
133. Peter Edward, Andy Sumner. 2014. Estimating the Scale and Geography of Global Poverty Now and in the Future: How Much Difference Do Method and Assumptions Make?. *World Development* **58**, 67-82. [[Crossref](#)]
134. Adam Wagstaff, Magnus Lindelow. 2014. ARE HEALTH SHOCKS DIFFERENT? EVIDENCE FROM A MULTISHOCK SURVEY IN LAOS. *Health Economics* **23**:6, 706-718. [[Crossref](#)]
135. Menale Kassie, Moti Jaleta, Alessandra Mattei. 2014. Evaluating the impact of improved maize varieties on food security in Rural Tanzania: Evidence from a continuous treatment approach. *Food Security* **6**:2, 217-230. [[Crossref](#)]
136. Yonas Alem, Gunnar Köhlin, Jesper Stage. 2014. The Persistence of Subjective Poverty in Urban Ethiopia. *World Development* **56**, 51-61. [[Crossref](#)]
137. Menale Kassie, Simon Wagura Ndiritu, Jesper Stage. 2014. What Determines Gender Inequality in Household Food Security in Kenya? Application of Exogenous Switching Treatment Regression. *World Development* **56**, 153-171. [[Crossref](#)]
138. Kristof Bosmans, Koen Decancq, André Decoster. 2014. The Relativity of Decreasing Inequality Between Countries. *Economica* **81**:322, 276-292. [[Crossref](#)]
139. Laurent Boyer, Karine Baumstarck, Teodora Iordanova, Jessica Fernandez, Philippe Jean, Pascal Auquier. 2014. A poverty-related quality of life questionnaire can help to detect health inequalities in emergency departments. *Journal of Clinical Epidemiology* **67**:3, 285-295. [[Crossref](#)]

140. Lein-Lein Chen, Seungmook Choi, John Devereux. 2014. Explaining Price Level Differences: New Evidence on the Balassa-Samuelson Effect. *Southern Economic Journal* 140212121118009. [[Crossref](#)]
141. Maxim L. Pinkovskiy, Xavier Sala-i-Martin. 2014. Lights, Camera,...Income! Estimating Poverty Using National Accounts, Survey Means, and Lights. *SSRN Electronic Journal* 91. . [[Crossref](#)]
142. Sarah Dykstra, Benjamin Dykstra, Justin Sandefur. 2014. We Just Ran Twenty-Three Million Queries of the World Bank's Website. *SSRN Electronic Journal* . [[Crossref](#)]
143. John Cockburn, Jean-Yves Duclos, Agnes Zabsonre. 2014. Is Global Social Welfare Increasing? A Critical-Level Enquiry. *SSRN Electronic Journal* . [[Crossref](#)]
144. Hector E. Maletta. 2014. Hunger Amidst Plenty: World Trends in Undernourishment and Malnutrition. *SSRN Electronic Journal* . [[Crossref](#)]
145. Richard Bluhm, Denis de Crombrughe, Adam Szirmai. 2014. Poor Trends. *SSRN Electronic Journal* . [[Crossref](#)]
146. Evidiki Tsounta, Anayochukwu Osueke. 2014. What is Behind Latin America's Declining Income Inequality?. *IMF Working Papers* 14:124, 1. [[Crossref](#)]
147. Robert Inklaar. 2013. "Price Levels and Economic Growth: Making Sense of Revisions to Data on Real Incomes": A Comment. *Review of Income and Wealth* 59:4, 614-622. [[Crossref](#)]
148. Garry D. Bruton, David J. Ketchen, R. Duane Ireland. 2013. Entrepreneurship as a solution to poverty. *Journal of Business Venturing* 28:6, 683-689. [[Crossref](#)]
149. Ingrid Woolard, Murray Leibbrandt, Jane Fortson. Social Programs and Transfers: Are We Learning? 361-389. [[Crossref](#)]
150. . Measuring levels and trends in absolute poverty in the world: open questions and possible alternatives 212-228. [[Crossref](#)]
151. Jerry A. Hausman, Agustin J. Ros. 2013. An econometric assessment of telecommunications prices and consumer surplus in Mexico using panel data. *Journal of Regulatory Economics* 43:3, 284-304. [[Crossref](#)]
152. Janet E. Kohlhase. 2013. The new urban world 2050: perspectives, prospects and problems. *Regional Science Policy & Practice* 5:2, 153-165. [[Crossref](#)]
153. Shatakshee Dhongde, Camelia Minoiu. 2013. Global Poverty Estimates: A Sensitivity Analysis. *World Development* 44, 1-13. [[Crossref](#)]
154. Simon Johnson, William Larson, Chris Papageorgiou, Arvind Subramanian. 2013. Is newer better? Penn World Table Revisions and their impact on growth estimates. *Journal of Monetary Economics* 60:2, 255-274. [[Crossref](#)]
155. Chenoa Flippen. 2013. Relative Deprivation and Internal Migration in the United States: A Comparison of Black and White Men. *American Journal of Sociology* 118:5, 1161-1198. [[Crossref](#)]
156. PierCarlo Nicola. Social Welfare Functions and Income Distributions 9-16. [[Crossref](#)]
157. Maxim L. Pinkovskiy. 2013. World welfare is rising: Estimation using nonparametric bounds on welfare measures. *Journal of Public Economics* 97, 176-195. [[Crossref](#)]
158. Derek D. Headey. 2013. The Impact of the Global Food Crisis on Self-Assessed Food Security. *The World Bank Economic Review* 27:1, 1-27. [[Crossref](#)]
159. Peter Edward, Andy Sumner. 2013. The Future of Global Poverty in a Multi-Speed World: New Estimates of Scale and Location, 2010-2030. *SSRN Electronic Journal* . [[Crossref](#)]
160. Maxim L. Pinkovskiy. 2013. World Welfare is Rising: Estimation Using Nonparametric Bounds on Welfare Measures. *SSRN Electronic Journal* . [[Crossref](#)]
161. Thomas Goda. 2013. Changes in Income Inequality from a Global Perspective: An Overview. *SSRN Electronic Journal* . [[Crossref](#)]

162. Jessie Handbury. 2013. Are Poor Cities Cheap for Everyone? Non-Homotheticity and the Cost of Living Across U.S. Cities. *SSRN Electronic Journal* . [[Crossref](#)]
163. Carlo Milana, Arvind Ashta. 2012. Developing microfinance: A survey of the literature. *Strategic Change* **21**:7-8, 299-330. [[Crossref](#)]
164. Sergio Tezanos Vázquez, Andy Sumner. 2012. Beyond Low and Middle Income Countries: What if There Were Five Clusters of Developing Countries?. *IDS Working Papers* **2012**:404, 1-40. [[Crossref](#)]
165. Ellen Hillbom, David Alm, Andreas Inghammar, Yahia Mahmoud. 2012. Assessing the role of property rights and legal empowerment in poverty reduction. *International Social Science Journal* **63**:209-210, 207-226. [[Crossref](#)]
166. Ravi Kanbur, Andy Sumner. 2012. POOR COUNTRIES OR POOR PEOPLE? DEVELOPMENT ASSISTANCE AND THE NEW GEOGRAPHY OF GLOBAL POVERTY. *Journal of International Development* **24**:6, 686-695. [[Crossref](#)]
167. Ugo Gentilini, Andy Sumner. 2012. What Do National Poverty Lines Tell Us About Global Poverty?. *IDS Working Papers* **2012**:392, 1-48. [[Crossref](#)]
168. Andy Sumner. 2012. Where Do the World's Poor Live? A New Update. *IDS Working Papers* **2012**:393, 1-27. [[Crossref](#)]
169. Sigbjørn Tveterås, Frank Asche, Marc F. Bellemare, Martin D. Smith, Atle G. Guttormsen, Audun Lem, Kristin Lien, Stefania Vannuccini. 2012. Fish Is Food - The FAO's Fish Price Index. *PLoS ONE* **7**:5, e36731. [[Crossref](#)]
170. Andy Sumner. 2012. Where Do The Poor Live?. *World Development* **40**:5, 865-877. [[Crossref](#)]
171. Orley Ashenfelter. 2012. Comparing Real Wage Rates. *American Economic Review* **102**:2, 617-642. [[Abstract](#)] [[View PDF article](#)] [[PDF with links](#)]
172. Branko Milanovic. 2012. Global inequality recalculated and updated: the effect of new PPP estimates on global inequality and 2005 estimates. *The Journal of Economic Inequality* **10**:1, 1-18. [[Crossref](#)]
173. Christopher Garroway, Burcu Hacibedel, Helmut Reisen, Edouard Turkisch. 2012. The Renminbi and Poor-country Growth. *The World Economy* **35**:3, 273-294. [[Crossref](#)]
174. Andy Sumner. 2012. Where Will the World's Poor Live? An Update on Global Poverty and the New Bottom Billion. *SSRN Electronic Journal* . [[Crossref](#)]
175. Philip Booth. 2012. ...and the Pursuit of Happiness - Wellbeing and the Role of Government. *SSRN Electronic Journal* **22**. . [[Crossref](#)]
176. Koen Decancq. 2011. Measuring global well-being inequality: A dimension-by-dimension or multidimensional approach?. *Reflète et perspectives de la vie économique* **Tome L**:4, 179-196. [[Crossref](#)]
177. Angus Deaton. 2011. Mesurer le développement : autres données, autres conclusions ?. *Revue d'économie du développement* **Vol. 19**:2, 13-59. [[Crossref](#)]
178. David Lam. 2011. How the World Survived the Population Bomb: Lessons From 50 Years of Extraordinary Demographic History. *Demography* **48**:4, 1231-1262. [[Crossref](#)]
179. Glenn Firebaugh. Income Inequality, Global . [[Crossref](#)]
180. Timothy Besley, Anne Case, Christina Paxson. 2011. Angus Deaton Symposium – Introduction. *The Economic Journal* **121**:554, F119-F122. [[Crossref](#)]
181. Oguzhan C Dincer, Michael J Hotard. 2011. Ethnic and Religious Diversity and Income Inequality. *Eastern Economic Journal* **37**:3, 417-430. [[Crossref](#)]
182. Angus Deaton,, Olivier Dupriez. 2011. Purchasing Power Parity Exchange Rates for the Global Poor. *American Economic Journal: Applied Economics* **3**:2, 137-166. [[Abstract](#)] [[View PDF article](#)] [[PDF with links](#)]

183. Paul Segal. 2011. Resource Rents, Redistribution, and Halving Global Poverty: The Resource Dividend. *World Development* **39**:4, 475-489. [[Crossref](#)]
184. Gernot Doppelhofer, Melvyn Weeks. 2011. Robust Growth Determinants. *SSRN Electronic Journal* **15**. . [[Crossref](#)]
185. Koen Decancq. 2011. Global Inequality: A Multidimensional Perspective. *SSRN Electronic Journal* . [[Crossref](#)]
186. Andreas Bergh, Therese Nilsson. 2011. Globalization and Absolute Poverty – A Panel Data Study. *SSRN Electronic Journal* . [[Crossref](#)]
187. Shatakshee Dhongde, Camelia Minoiu. 2011. Global Poverty Estimates: A Sensitivity Analysis. *SSRN Electronic Journal* . [[Crossref](#)]
188. Andreas Bergh, Therese Nilsson. 2011. Globalization and Absolute Poverty A Panel Data Study. *SSRN Electronic Journal* . [[Crossref](#)]
189. Camelia Minoiu, Shatakshee Dhongde. 2011. Global Poverty Estimates: A Sensitivity Analysis. *IMF Working Papers* **11**:234, 1. [[Crossref](#)]
190. Chakrangi Lenagala, Rati Ram. 2010. Growth elasticity of poverty: estimates from new data. *International Journal of Social Economics* **37**:12, 923-932. [[Crossref](#)]
191. Angus Deaton,, Alan Heston. 2010. Understanding PPPs and PPP-based National Accounts. *American Economic Journal: Macroeconomics* **2**:4, 1-35. [[Abstract](#)] [[View PDF article](#)] [[PDF with links](#)]
192. Angus Deaton,. 2010. Understanding the Mechanisms of Economic Development. *Journal of Economic Perspectives* **24**:3, 3-16. [[Abstract](#)] [[View PDF article](#)] [[PDF with links](#)]
193. María Emma Santos, María Ana Lugo, Luis Felipe López-Calva, Guillermo Cruces, Diego Battistón. Chapter 1 Refining the basic needs approach: A multidimensional analysis of poverty in Latin America 1-29. [[Crossref](#)]